

September 12-27, 2013 iGAVEL 9/12/2013-9/27/2013

**LOT #**

**3088049 14k Diamond Bangle Bracelet**

14k diamond bangle bracelet containing 50 round brilliant diamonds measuring .03 to .05 ct with a total weight of approximately 1.50 ct. (VS2-SI and I-J) pave set within a gold swirl pattern on top of the bangle. 6" interior diameter, safety chain and clasp. 5/8" at widest pt. 32.1 grams. Condition: Excellent condition. 1,200.00 - 1,400.00



**3088050 18k Custom Cluster Diamond Ring**

18k yellow gold custom cluster diamond ring containing one round brilliant cut diamond measuring 7.3 mm and weighing approximately 1.50 ct (I1 clarity, I color) and 27 single cut and round brilliant cut diamonds and 8 baguette diamonds (VS2-I1 clarity, H-I color) with a total weight of approximately 1.20 ct. 16 grams. Ring size: 5 with tension sizer. 1-5/8" H x 7/8" W top. Condition: Overall very good condition with very minor chips on a few small diamonds. 2,000.00 - 2,500.00



**3088051 18k Yellow Gold Necklace, 36.2 grams**

One 18k yellow gold oval link chain necklace with hammered dot finish pattern, 44" L with clasp, 36.2 grams. Condition: Excellent condition. 1,250.00 - 1,450.00



**3088052 Contemporary Plat Dia Yellow Sapphire Ring**

Platinum diamond and yellow sapphire ring in contemporary setting containing 43 round brilliant cut pave set diamonds (VS1-VS2, H-I) with a total wt of approx. .50 ct. and two bezel set yellow sapphires measuring 2.5 mm each, (.10 ct each). 7.4 grams. Ring size: 6-3/4 with sizer. Condition: Excellent condition. 900.00 - 1,200.00



**3088053 2 Concord 14k Ladies Watches**

Two Concord 14k yellow gold ladies quartz wristwatches with double-rope bracelet straps. 1st item: One ladies 14k Concord wristwatch with rectangular face and gold dial, marked on back: 14K, 2061657 and 567435. 2nd item: One ladies 14k Concord wristwatch with round face and gold dial, marked on back: 14K, D40, 2061269 and 567159. Marked 585 (14) on each bracelet strap. 35.6 total grams. 6-1/4" L each. Includes original boxes. Condition: Dust on inside of each watch face. Watches not running at time of testing. 800.00 - 1,000.00



**3088054 Movado Art Deco 14k Dia & Sapphire Lady's Watch**

Movado Art Deco style ladies 14k white gold diamond and sapphire wristwatch, square white dial, stepped down mounting containing 18 round brilliant diamonds with a total weight of approximately .54 ct (H-I color, VS2 clarity) and 6 square cut sapphires. 21.4 total grams. 6-5/8" L. Marked 14k on face and band. Condition: Not in working condition. Engraved T.A.T. 1953 on back. 800.00 - 1,000.00



**3088055 Ladies 14k Diamond Cocktail Ring**

Ladies diamond and 14K yellow gold ballerina cocktail ring, (marked 14K). One central oval diamond weighing .20 ct. surrounded by 12 round brilliant diamonds and 24 straight and tapered baguettes, all with a total weight of approximately 1.20 cts. Diamonds of approximately SI1 clarity and approximately G-I color. Ring size: 5-3/4. 3.6 grams. Condition: The mounting has extra solder that connects the round diamonds to the baguette diamonds. 1,000.00 - 1,200.00



September 12-27, 2013 iGAVEL 9/12/2013-9/27/2013

**LOT #****3088056 3 Victorian Ladies Gold Accessories**

Lot of 3 Victorian ladies items. 1st item: Small cylindrical push-up container, possibly a lipstick or scent holder, with hinged engraved lid, marked inside 14K with mark for W & S. Blackinton Co., 6651 230. Monogrammed MLB. On a woven gold-plated chain with a 14k clasp, 22"L (including holder) 1-5/16"H. Total weight with chain: 18.5 grams. 2nd item: Victorian Renaissance Revival style 10k yellow gold (tested, not marked) bracelet, engraved with designs of trefoils and columns, centered by a carved coral cameo, 15.3 grams, 6-3/8" L. 3rd item: Victorian 10k yellow gold hinged patch box or small powder compact, engraved all over floral design with the top also monogrammed Mary Lee, small ring at top for hanging on a chatelaine, 16.3 grams, 1-1/2" diameter. Condition: All items overall good condition with the following features noted: 1st item: Hinge slightly loose, tiny dents to bottom. 2nd item: Crack in coral and slight wear on bracelet. 3rd item: A few tiny dents. 650.00 - 850.00



H-I) with a total weight of 1.70 ct. 12.1 grams. Ring size: 4-3/4. Condition: Minor abrasions on surface of rubellite. 1,000.00 - 1,400.00

**3088060 Two 18k Gold Chain Necklaces**

Two 18k yellow gold chain necklaces. 1st chain: One 24-1/2" L necklace in box link design, tested as 18k, not marked. 2nd chain: One 17-3/4" L necklace in flat herringbone pattern, marked "750". 18.9 grams total weight of both chains. Condition: Both in excellent condition. 650.00 - 750.00

**3088061 Two 14k Chain Necklaces**

Two 14k yellow gold chain necklaces. 1st necklace: 14k necklace with brushed gold oval and cutwork links, marked "Italy", 30" L, 15.1 grams. 2nd necklace: 14k necklace (tested, not marked) with eight large bright cut openwork links between small filigree links and no clasp. 32" L, 13.4 grams. Total weight: 28.5 grams. Condition: Both in excellent condition. 750.00 - 950.00

**3088057 14k Diamond Heart Necklace**

14k diamond heart necklace containing 25 round brilliant diamonds with a total weight of approximately .75 ct. of good cut and clarity, pave set in 14k white gold and suspended from a 14k yellow gold herringbone necklace. Marked "14K Italy". 17" L, 20 grams total. Condition: Excellent condition. 700.00 - 900.00

**3088062 Travel Jewelry incl 14k with Synthetic Stones**

Group of travel jewelry including three 14k yellow gold line bracelets with synthetic diamonds, 7" L ea.; one 14k yellow gold mounting with synthetic emerald and synthetic baguette diamonds; one 14k white gold mounting with synthetic emerald and two synthetic trilliant diamonds; one 14k white gold mounting with faux cushion cut sapphire and two synthetic trilliant diamonds; one oval synthetic diamond in gold-plated mounting; matching pin and earrings with freshwater pearls and gold-plated flower mountings; 17-1/2" L gold-plated woven necklace. Total weight of items marked 14k: 73.5 grams. (9 items total) Condition: Excellent condition. 1,200.00 - 1,400.00

**3088058 14k Mesh Link Bracelet**

14k yellow gold mesh link bracelet in graduated style with safety chain and clasp. 7-1/8" L, 26.1 grams. Condition: Overall good condition with one crimp on bracelet near clasp. 725.00 - 825.00

**3088059 14k Rubellite and Diamond Ring**

14k white gold rubellite and diamond ring containing one pear-shaped rubellite tourmaline, measuring 14mm x 11mm and weighing approximately 7 ct. The rubellite is surrounded by 19 round brilliant cut diamonds (VS2-SI1,



September 12-27, 2013 iGAVEL 9/12/2013-9/27/2013

**LOT #****3088063 14k Flower pendant/brooch w/ diamonds**

14k yellow and white gold naturalistic flower pendant/brooch with diamond cluster center with a total weight of approximately .50 ct (I-J, SI2). Gold tested to be 14k. Impressed mark on reverse for mounting: KARBRA . 28.6 grams. 1-7/8" H x 1-5/8" W. Condition: Excellent condition. 750.00 - 850.00

**3088064 14k Yellow Gold Omega Collar Necklace**

14K yellow gold Omega collar necklace with safety clasp. 16-3/4" L. 39.5 grams. Condition: Excellent condition. 1,000.00 - 1,200.00

**3088065 Italian 14k Link Bracelet**

14k yellow gold panther link bracelet marked "585 Italy". 7" L x 7/8" W with two safety clasps. 40.1 grams. Condition: Excellent condition. 1,150.00 - 1,250.00

**3088066 18k Gold Chain, 20.3 grams**

18k yellow gold chain with lobster claw clasp , 29-1/2" L. Gold content tested, mark worn. 20.3 grams. Condition: Excellent condition. 700.00 - 900.00

**3088067 14k Graduated Link Necklace**

14k yellow gold graduated link necklace, marked "585". 17-1/8" L with lobster claw clasp. 35.4 grams. Condition: Excellent condition. 900.00 - 1,100.00

**3088068 14k Lady's Luva Bracelet Watch w/ Covered Dial**

14k lady's bracelet watch with covered dial in the shape of a hat. Watch made by Luva. Cover contains 6 diamond melee of fair quality and is missing one stone. The bracelet has a safety chain. 47.4 total grams. Condition: Watch not working at time of inspection. Case missing one diamond melee. 700.00 - 900.00

**3088069 Art Deco Diamond Platinum Ring**

Ladies' Art Deco .900 platinum and diamond ring. Single .56 carat transitional old European cut/round brilliant cut diamond (VS1 clarity, J color), in a square setting surrounded by sixteen round diamonds on the sides and four marquise shape diamonds in the corners. Total weight of supporting diamonds: .80 carat (combined). Size 8-1/2, 4.9 grams. Copy of fair market value appraisal report available on request. Provenance: An Alabama estate. Condition: Excellent condition. 1,200.00 - 1,400.00

**3088070 2 Pair 14k Dangle Earrings**

Two pair 14k dangle earrings. 1st pair: 14k yellow gold bohemian style dangle earrings with post and Omega backs, 2" L, 18.2 grams. 2nd pair: 14k white gold (tested) cultured pearl and diamond dangle earrings for pierced ears, 2-1/4" L, 8.3 grams. Total weight: 26.5 grams. Condition: Overall very good condition with minor surface scratches due to wear. 650.00 - 750.00

**3088071 3 1915 Austrian Ducat Coin Jewelry Items**

Three 1915 Austrian Ducat 22K gold coins, one mounted as a brooch in a brushed gold setting (unmarked but tests 14K) and the others mounted as clip style earrings (settings unmarked but tests 14K ). 17.9 total grams. Condition: Overall excellent condition. 700.00 - 900.00

**3088072 18k Dia Freshwater Pearl Necklace/Bracelet combo**

Interchangeable seven strand freshwater "rice" pearl necklace/bracelet combination with two 18k yellow gold and diamond clasps. Clasps marked "750" and contain 48 round brilliant diamonds of good cut and clarity with a total weight of approximately 1.44 ct. Necklace: 24-1/2" L, Bracelet: 7-3/4" L. Condition: Excellent condition. Mountings with safety clasps. 400.00 - 600.00



September 12-27, 2013 iGAVEL 9/12/2013-9/27/2013

**LOT #****3088073 Chicago Arts & Crafts Silver Necklace**

Arts & Crafts period sterling silver necklace made by The Art Silver Shop of Chicago, circa 1920. Fourteen hand hammered silver oval links and one large central pendant with bezel set blue agate cabachon stone, surrounded by foliate shaped motifs. Signed Handmade SAS Sterling. 15" L overall. Provenance: a private Nashville, Tennessee collection. Condition: Excellent condition. 900.00 - 1,200.00

**3088074 Sterling Cake Basket, Galt & Bro.**

Sterling silver footed cake basket with pierced swing handle over a cartouche form body with Rococo style scrolled edges and pierced decorative edges, and a diaper and scroll engraved center with blank monogram cartouche. Raised on four scrolled feet. Marked Galt & Bro. Sterling with company's hallmark on base (Washington, DC, circa 1892). 10"H x 12-1/2" W x 11"D. 35.32 oz troy. Condition: Overall very good condition with a couple of small light dents and small areas of stubborn tarnish. 800.00 - 1,200.00

**3088075 5-pc International Sterling Tea Service**

International sterling silver tea service, pattern C340, including coffee pot, tea pot, creamer, covered sugar and waste bowl. C340 marked on base. 77 oz troy total. 9-3/4" H to 3-3/8" H, 10-1/4" W to 5-3/4" W, 4-1/2" D to 3" D. Group also includes one Sheffield Ellis-Barker Silver Co, serving tray, with maker's mark and "England" on base, circa 1912-1932, 28-3/4" W incl handles x 18" D. All items have monograms. Condition: Very good condition with acceptable surface scratches due to age. All items have monograms. 1,400.00 - 1,550.00

**3088076 Sterling Platter, Black Starr & Frost**

Sterling silver tea tray or platter, Black, Starr and Frost of New York, oblong with deeply cast Rococo style scroll and foliate border and side handles, plain central section with script monogram MPL. Marked on back Sterling 805 24 in. / Black, Starr & Frost. 30" x 18-1/2"



(including handles). Circa 1915. 134.7 oz troy. Provenance: originally owned by Minnie Peters Wright Lee of Memphis, wife of Bayliss Lee of the Lee Steamboat family. Condition: A few scattered tiny dents and some surface scratching, overall very good condition. 4,000.00 - 6,000.00

**3088077 81 pcs Reed and Barton Francis I Sterling Flatware**

Reed & Barton Sterling silver flatware, Francis I Pattern, service for eight, script Reed and Barton mark. Eighty-one (81) pieces including 8 dinner knives, 8 steak knives, 8 butter spreader knives, 8 dinner forks, 8 salad forks, 8 cocktail forks, 8 round bowl cream soup spoons, and 16 teaspoons, plus 9 serving pieces: master butter, sugar shell, pierced nut or bon bon spoon, pie/dessert server, gravy ladle, pickle fork, 7-3/4" cold meat fork, solid table serving spoon and pierced table serving spoon. All knives have stainless Mirrostele blades. Combined weighable silver (excluding knives): 75.52 oz troy. American, mid 20th century. Condition: Very good condition. No monograms. 2,500.00 - 3,500.00

**3088078 Wallace Sterling Flatware, Lucerne, 72 pcs.**

Wallace sterling silver flatware, 72 pieces in the Lucerne Pattern (introduced 1896). Service for 12. Includes 12 dinner knives with hollow sterling handles and stainless blades, 12 dinner forks, 12 salad forks, 12 butter spreader knives with silver blades, 12 round bowl soup spoons, and 12 teaspoons. 72.99 oz troy (excluding dinner knives). American, early to mid 20th century. Condition: Some small dents to dinner knife handles but overall very good condition. No monograms. 1,500.00 - 2,000.00

**3088079 Whiting Flatware, Hyperion w/ lg Ladle and Case**

35 pieces Whiting sterling silver flatware, Hyperion pattern (introduced 1888), including 1 soup ladle with silver gilt bowl, 1 gravy ladle with silver gilt bowl, 1 spreader, 1 mustard spoon, 1 salt shovel, 6 soup spoons, 6 place spoons, 6 teaspoons, 6 dinner forks, 6 luncheon forks, all with retailer mark for James K. Lemon & Son, Louisville, KY, monogrammed "W",



September 12-27, 2013 iGAVEL 9/12/2013-9/27/2013

12-3/4" to 3-3/4" L, 47 oz troy. Also included is custom made mahogany silk and velvet-lined 3-level fitted flatware case with retailer's gilt stamped label for James K. Lemon and Sons, Louisville, KY, 10-1/4" H x 20-1/2" W x 16" D. Condition: In overall very good condition with some surface scratches due to age. Mahogany case with some surface scratches and some wear to velvet interior lining. 1,200.00 - 1,400.00

### 3088080 62 Pcs Sterling Flatware, Fairfax Pattern

62 pieces of sterling silver flatware in the Fairfax pattern. The majority are by Durgin, a few are in the same pattern by Gorham, which acquired Durgin and continued the Fairfax pattern under the Gorham name. Includes 6 Dinner Knives, 7 luncheon knives (one has New French Blade), 6 Dinner Forks, 7 Luncheon forks, 8 salad/dessert forks, 6 cocktail forks, 9 teaspoons, 4 long handle ice tea spoons, 2 round bowl soup spoons, 1 demitasse spoon, 1 salt spoon, 1 table/serving spoon, 1 casserole spoon, 1 pancake server, 1 jelly server, and 1 flat handle butter spreader. 53.385 oz troy weighable silver. American, early to mid 20th century. Condition: 1 Lunch fork has bent tines. Other pieces in very good condition. Most pieces are monogrammed D. 1,200.00 - 1,800.00



### 3088081 Wallace Sterling Flatware, Rosepoint, 45 pcs

Wallace "Rosepoint" Sterling silver flatware. 45 pieces total including 8 dinner forks (7" L), 2 iced tea spoons, 11 teaspoons, 8 dinner knives (9" L), 7 salad forks, 8 butter spreaders (5-1/2" ), 1 cake server (9-3/4" L). 37 30 weighable troy ounces. All but cake server and dinner knives monogrammed LHW en verso. Provenance: Private Knoxville, TN estate. Condition: Overall very good condition with some scratches on dinner knife blades. All but cake server and dinner knives monogrammed en verso. 700.00 - 800.00



### 3088082 40 pcs Continental Silver Flatware, circa 1800

1st item: Six (6) early Dutch silver tablespoons, each having oval handles with raised central rib, Dutch silver quality mark (.875), unknown maker's mark, assay mark with crowned flower,



and crowned C, possibly a date mark. Late 18th to early 19th century. 8-1/2"L, no monograms. 13.53 oz troy. 2nd item: Six (6) silver serving or tablespoons with 13 lods quality marks and various maker's marks, 8-2/3"L. 8.87 oz troy. Finnish or Swedish, circa 1800. 3rd item: Twelve (12) teaspoons and six (6) forks with oval handles and raised central rib, the forks marked with 13 lods quality mark and maker's mark TH, the spoons unmarked. Probably Finnish or Swedish, circa 1800. 15.26 oz troy. Combined total weight of 40 pieces: 37.66 oz troy total weight. Condition: 1st item: excellent, one with minor wear to tip of bowl. 2nd item: few small dents to bowls. 3rd item: a few small dents to bowls and wear to tips of tines, overall very good condition. 600.00 - 700.00

### 3088083 George II and George III Sterling Spoons and Salts

Two footed salts, one with marks for George Wickes, 1743, London, the other with marks for London 1783-1784, maker's mark IS over IR, both approximately 2-3/4" diameter. Some light pitting and minute dents. Two sterling salt spoons, reverse tipt fiddle handles, marks for London, 1825-1826, maker's mark JD, 4"L. Two George III dessert spoons with oval tipt handles and crest on reverse of a fish diving into water (wear to crest). 8"L, marks for London, with maker's and date marks rubbed. Total weight all items: 8.99 oz troy. Condition: All items in very good condition unless otherwise noted. 300.00 - 500.00



### 3088084 18th century Irish silver soup ladle, crested

George III Irish sterling silver soup ladle with shell form bowl and knight's head crest, monogrammed TMA or JWA, marks on back for Michael Keating of Dublin. Circa 1780. 4.9 oz troy, 13"L. Condition: Monarch mark rubbed, date mark not present or obliterated, possible repair or reinforcement to upper handle near bowl. Few very small dents to bowl. 300.00 - 350.00





September 12-27, 2013 iGAVEL 9/12/2013-9/27/2013

**LOT #****3088085 Large Lot of US & World Coins**

Large grouping of US and World currency, all circulated, including 6 US Peace \$1 coins (b/t 1921 and 1935, 5.14 oz troy); 2 US Morgan \$1 coins (both 1923, 1.71 oz troy); 5 Ike \$1 coins (4 @ 1971, 2.89 oz troy, 1 dated 1978), 6 Susan B. Anthony \$1 coins, 8 Walking Liberty Half \$1 coins (8 dated b/t 1916 - 1947, 2.77 oz troy, 1 w/ illegible date, 0.385 oz troy); 26 1964 Kennedy Half \$ coins (10.435 oz troy); 24 1965 - 1970 Kennedy Half \$ coins (8.905 oz troy); 1 1971 Kennedy Half \$ coin; 4 1963 Ben Franklin Half \$ coins (1962 and 1963, 1.595 oz troy); 5 War Nickels, 1 @ 1942 @ 0.150 oz troy; 1 Buffalo Nickel; 22 1941 to 1964 Washington Quarters (4.37 oz troy); 1 1913 Barber Quarter; 11 Mercury Dimes (b/t 1916-1945, 0.86 oz troy); 17 Roosevelt Dimes (b/t 1946-1964, 1.355 oz troy); small bag of unsorted US coins in various conditions and a grouping of unsorted World coins (some silver) and currency including Canada, Britain, Mexico, Australia and Germany. Additionally included in this lot are five 1 oz. bags of silver (purity not tested). Condition: All coins circulated and in various states of condition. 650.00 - 750.00

**3088086 3 Liberty Head Gold Coins, \$5 and \$1**

Grouping of 3 circulated Liberty Head gold coins including an 1886 \$5 Liberty Head gold coin and two (2) 1853 \$1 Liberty Head gold coins. Total weight 11.6 grams. Condition: Circulated with oxidation, one \$1 coin has drilled hole. 550.00 - 650.00

**3088087 Chinese Ming Gilt Bronze of Wenchang Wang**

Chinese Ming Period gilt bronze of Wenchang Wang, the Daoist Deity of Culture and Literature. Shown seated wearing a ceremonial robe and head dress, and holding a hu tablet. Seated on a separate, later bronze circular base. 14" H. 17th century. Condition: Overall wear and loss to gilt. Old loss to head dress and an old hole to back left side of bronze. 3,000.00 - 4,000.00

**3088088 Chinese Archaic Zhou Dynasty Bell**

Chinese archaic bronze zhong (bell), Zhou dynasty (3rd century B.C.) with engraved designs to base of handle and top of bell, resting on a conforming hardwood stand. 11 1/2" total H. 11 1/4" H for bell. Condition: Some light oxidation and pitting. Old intact small break to rim of base. 2,500.00 - 3,500.00

**3088089 Pair Chinese Carved Gong Stands**

A pair of Chinese carved hardwood gong stands. 37 1/2" H x 13 3/8" W x 13" D. Circa 1920's. Condition: Overall very good condition. 600.00 - 800.00

**3088090 Massive Japanese Meiji Porcelain Charger**

Massive Meiji period Japanese Satsuma porcelain charger, the front panel depicting warriors and a nobleman with butterfly and foliate border and the underside with flying crane decoration. Signed on the base. 23 5/8" dia. Condition: Overall excellent condition. 700.00 - 1,000.00

**3088091 Monumental Satsuma Palace Vase w/ Stand, 48"**

Large signed Japanese Satsuma palace vase with stand with scalloped rim, fish and ring handles with applied tassels, animal paw feet and and enameled and gilt Samuri warrior decoration. Stand also signed. Urn measures 39 1/2" H. Stand measures 8 1/2" H. Circa 1900. Condition: Tight crack to base of urn with hairline crack to same area extending up the side (about 8") with plaster residue at base. Old repaired break to one of the ring handles. Three separations noted to the tassels. Overall general wear to paint and gilt decoration. 400.00 - 600.00

**3088092 Chinese Republic Period Vase**

Chinese underglaze blue and copper red celadon ground vase with floral and foliate decoration and pierced handles. Housed in the original fitted box. Faint illegible red stamp to base. Vase - 11 1/2" H. Box - 5 3/4" H x 13 1/8" W x



September 12-27, 2013 iGAVEL 9/12/2013-9/27/2013

9" D. Circa 1900. Condition: Excellent condition. 700.00 - 1,000.00

**3088093 Pr. Chinese 100 Flowers Porcelain Vases**

Pair of two Chinese porcelain vases having mille fleur or 100 Flower decoration. The smaller vase with red Ch'ien Lung seal to base and the larger vase with red four character mark to base. Heights are 8 3/4" H and 10" H. 20th century. Condition: Both overall excellent condition with very slight wear to gilt rims. 350.00 - 450.00

**3088094 4 pcs. Asian Ceramics, incl archaic celadon**

Grouping of three (3) 13th/14th century Korean celadon pottery bowls with fine white slip inlay decoration (ranging in size from 3 3/8" H x 7 7/8" dia. to 1 1/2" H x 5" dia.) and one (1) 19th century Asian blue and white glazed decorated small vase, 2 1/4" H. Condition: Chip to rim of small celadon bowl. Chip to rim of tannish celadon bowl. Hairlines and discoloration to exterior of remaining bowl. Small vase very good condition. 300.00 - 350.00

**3088095 24 pcs Asian Export Silver Flatware**

Twenty four pieces handmade silver fish or dessert knives and forks with hollow handles decorated in a repousse leaf design, and silver blades and tines. Unmarked. Knives 7-7/8", forks 6-7/8". Chinese or Japanese, mid to late 19th century. 29.08 oz troy Condition: Several minute dents to hollow handles, blades and tines in good condition. 600.00 - 800.00

**3088096 Meiji Mixed Metal Figurine, Dog and Turtle**

Small silver and bronze sculpture, depicting a silver puppy with his paw atop a patinated bronze turtle. Japanese character marks to underside. 4"H x 6"W x 3"D. 16.45 oz troy. Late Meiji period. Condition: A few small dents and scratches (largest 1/4", near base). 300.00 - 350.00

**3088097 Pr. Chinese Silver Cuff Bracelets**

Pair of shaped Chinese silver cuff bracelets, repousse chased designs of flowers and foliate leaves, marked underside "silver" and "China". Early 20th century. 3 1/2" H. 4.080 troy ounces. Condition: Overall very good condition. 250.00 - 350.00

**3088098 2 Asian Silver Ingots**

Two Asian silver ingots, both of rectangular form with Chinese characters. Tested 90 - 100% purity. 4 1/2" x 1 5/8" x 1/4" and 1 5/8" x 1/4". 13.11 total troy ounces. Condition: Overall very good condition with minor wear. 250.00 - 350.00

**3088099 Lalique Crystal "Bamara" Lion**

Lalique French frosted crystal Bamara Lion. Inscribed "Lalique France" on the base. 7 3/4" H. 20th century. Condition: Overall excellent condition. 350.00 - 400.00

**3088100 Lalique French Crystal Leopard**

Lalique French crystal crouching leopard figure. Inscribed "Lalique France" on the base. 14 1/2" L x 4 1/4" H. 20th century. Condition: Overall excellent condition. 400.00 - 600.00

**3088101 4 Lalique Ring Holders & Tiffany Apple**

Grouping of five (5) crystal items including four signed Lalique figural ring holders with swan, love birds, bird and fish centers and a signed Tiffany apple. Ranging in size from 2" H to 3 1/2" H. All 20th century. Condition: All items excellent condition. 200.00 - 250.00

**3088102 Student Lamp w/ Art Glass Shades, Steuben**

Double arm table or student lamp with gold aurene art glass shades, Steuben marks. The standard with foliate decoration and mounted on a marble base. Lamps measure - 18 1/8" H x 16 3/4" W. Shades measure 5" H. Early 20th century. Condition: Some cracks and chipping



September 12-27, 2013 iGAVEL 9/12/2013-9/27/2013

to marble base. Glass shades in excellent condition. 500.00 - 600.00

### 3088103 17 pcs. Art Glass, poss. Steuben

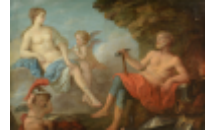
Large lot of unsigned art glass, some possibly Steuben. 1st item: Iridescent art glass lamp with bronze base, 11"H overall. 2nd item: Amber glass lamp with pulled green feather design and brass base, 14" H overall. 3rd item: Iridescent footed glass bowl, 4" diameter, 2-1/3"H. 4th item: Iridescent art glass vase, 6"H, drilled hole in one side, small chip to lower edge. 5th item: Small flashed glass vase with engraved floral design, 4"H. 6th and 7th items: two iridescent vases, both 4-1/4"H. 8th through 11th items: four iridescent saucers or underplates, 4-3/4" diam, one with 1" fissure to rim, all showing signs of wear at rims. 12th through 17th items: six green hand blown glass plates or saucers, 6-1/4" diameter. Condition: See item description 400.00 - 500.00



20th century. Condition: Larger icon with slight loss to paint and overall cracklure. Smaller icon with losses to paint, especially to perimeter, corners and sides. 500.00 - 800.00

### 3088106 Attr. LaGrenée, Vulcan and Venus, oil on canvas

Oil on canvas mythological painting of Venus and Vulcan, attributed to Louis Jean Francois LaGrenée (French, 1725-1805). Venus sits at left, attended by two cherubs, while her blacksmith husband Vulcan looks on admiringly, resting against his anvil with a hammer in his hand. Possible signature in Venus's lower left robe area (under cherub). Ornate 19th century giltwood frame with bead, ovolo and acanthus moldings. 17" x 25-3/4" sight, 28-1/2" x 37" framed. Condition: Old relining and later stretcher. Small flake to upper right corner, 3/4" area of flaking at lower center, 3/4" area of flaking near Vulcan's leg, overall craquelure. Blacklight reveals a scattered areas of inpainting. Frame shows scattered small losses and abrasions and corner repairs. 5,000.00 - 7,000.00



### 3088104 Santos, Crucifix, & Lion's Head Wall Bracket

1st item: Carved and polychrome painted wooden female Santos figure in prayerful pose. 14 1/2" H. 19th century. 2nd item: Small bronze crucifix in a fitted leather traveling case. Some traces of gilt retained. 8" H x 5 1/2" W. Late 19th/Early 20th century. 3rd item: Metal gilt wall bracket with lion's head mask and rosettes on the side, fitted with a gilt wood and gesso top. 11 1/4" H x 9" W x 8" D. Late 19th/early 20th century. Condition: 1st: Scattered paint losses and heavy chipping to base. 2nd item: Interior hanger for one arm broken. Interior silk lining worn and frayed. Wear and grime to leather case. 3rd item: Losses to gilt and corner of top. 400.00 - 500.00



### 3088107 Pr. of Oil Paintings of putti, signed Brun

French School, mid-19th century, pair of oil on panel paintings depicting harvesting putti. One group of cherubs is seen harvesting sheafs of wheat, the other holding large clusters of grapes. Possibly part of a Four Seasons series. One painting signed lower left, C. Brun (possibly after Charles Le Brun, 1616-1690, or Charles Guillaume Brun, 1825-1908). The other possibly signed lower right (repair makes it difficult to see). Partially legible 19th century French labels stenciled en verso. Both framed in ornate antique molded giltwood frames. 8-1/4" x 7" sight, 16" x 14" framed. Condition: Painting with wheat: 1/2" light abrasion at center cherub's lower left leg, losses to rabbet molding in lower right corner of frame. Painting with grapes: 1/4" repair lower left over possible signature. Losses to rabbet molding in corner of frame, upper right; scattered inclusions; loss to corner beading in upper right corner. Both frames exhibit some abrasions, scattered shrinkage cracks and small corner chips. 1,000.00 - 1,500.00



### 3088105 2 Russian Eastern Orthodox Icons

Two Russian Eastern Orthodox icons including one large rectangular icon with tempura painted face and an embossed and chased silvered brass overlay depicting Saint Barbara holding a chalice and titled in Cyrillic "AGIA BAPBAPA" (15 7/8" H x 11 5/8" W), and a smaller painted and gilt gesso icon on wood depicting Madonna and Child (7 1/4" H x 6 3/8" W). 19th century/Early





September 12-27, 2013 iGAVEL 9/12/2013-9/27/2013

**LOT #****3088108 Henri Alexis Schaeffer Paris Street Scene**

Henri Alexis Schaeffer (French, 1900-1975) oil on canvas night time Paris street scene. Signed lower left. Housed in the original gilt wooden frame. Sight: 17 3/8" H x 20 1/4" W. Framed: 22 7/8" H x 25 7/8" W. Biography: Henri Alexis Schaeffer was born in Paris, France in early August of 1900. A student at the Ecole Nationale des Beaux Arts in Paris, Schaeffer studied painting under the hand of the master Cormon. He was a member of the Salon des Artistes Francais from 1934. Source: Benezit Dictionnaire. Condition: Overall very good condition. 1,200.00 - 1,500.00



years. He moved to America in 1922 and settled on Long Island where he continued to paint until his death there in 1967. Source: Michael David Zellman, 300 Years of American Art. Condition: Painting: Small (under 1/8") chip in paint in upper left quadrant (in red background), otherwise very good condition. Frame: Several small scattered abrasions and chips to molding. 700.00 - 900.00

**3088111 Anthony Klitz o/c, Thames Landscape**

Anthony (Tony) Robert Klitz (British, 1917-2000) oil on canvas, Impressionist style urban landscape depicting figures walking on a streetlight-lined sidewalk beside the Thames. The buildings of London are barely visible through fog in the background. Signed lower right. Giltwood frame with linen liner. 19-1/2" x 23-1/2" sight, 25" x 29" framed. Biography: Klitz studied painting and drawing at Cheltenham Art College and served in World War II. He later lived in Ireland. Klitz is best known for his Impressionist urban landscape paintings and depictions of London's watery light. (Source: Online Encyclopedia of Irish and World Art). Condition: Excellent condition. Some small spots/stains to frame. 500.00 - 700.00

**3088109 Louis Dali o/b, Au Cadet, Paris**

Louis Dali (French, 1905-2001) oil on board painting depicting a Paris street in autumn. The shops lining the street include the famed restaurant Au Cadet de Gascogne. Figures stroll along the sidewalk in the left foreground, including Dali's signature child in red coat. 10" x 13" sight, 16" x 20" framed. Condition: Some abrasions and losses to gilding on frame. Painting has light area of abrasion in the tree limbs (appears to affect only the varnish layer). 400.00 - 600.00

**3088110 David Burliuk O/B Portrait, poss. Mary Claire Burl**

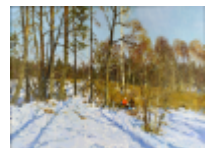
David Davidovich Burliuk (Russian/American, 1882-1967) oil on board, profile portrait of a young woman, possibly the artist's granddaughter. Pencil inscription en verso: "Mary Claire Burliuk 1960". Signed lower left "David Burliuk". Linen mat, giltwood molded frame. 5" x 5" sight, 11-1/8" x 11-1/8" framed. Biography: Born into a privileged class of Russian Society, David Burliuk became a central figure in the history of the Russian avant-garde movement as an accomplished poet, art critic, and exhibition organizer. He studied at the Kazan School of Fine Arts in 1898, then in Odessa, Moscow, Munich, and in Paris at the Ecole des Beaux Arts, however, as a breaker of artistic tradition, he found himself expelled from the Moscow Institute in 1911. His early works were Fauve-like and were exhibited with the Blue Riders in Munich. With the advent of World War I, he left Russia and traveled for four

**3088112 O/C Attr. William Witherington, The Robin**

English School, mid 19th century, oil on canvas genre painting depicting a father and two children watching a Robin in the lane, a few feet away from their cottage doorstep. Unsigned; plaque attached to frame reads "The Robin, W.F. Witherington" (William F. Witherington, English, 1785-1865). Carved antique giltwood frame. 25-3/4" x 21-3/4" sight; 34" x 30-1/4" framed. Condition: Relined. Scratch to lower left quadrant affecting father's leg. Overall craquelure. Few scattered chips to frame. 1,200.00 - 1,500.00

**3088113 Alexander Kremer, oil on canvas, In the Forest**

Alexander Kremer (Russian, b. 1958) oil on canvas landscape, titled "In the Forest". Giltwood frame with carved corner ornamentation. 22"h x 31" sight; 32" x 39-1/2"



September 12-27, 2013 iGAVEL 9/12/2013-9/27/2013

framed. Condition: Excellent condition. 500.00 - 700.00

wear. 300.00 - 350.00

### 3088114 2 Paintings of Ballerinas by Yuli Sheinis

Yuli Sheinis (Russian, b. 1935), two oil on canvas paintings of ballerinas, each depicted at the barre, one in profile, the other with her back to the viewer. Each framed in a deep woodgrain frame with silver metal front. Sight: 24" x 12", framed 26" x 14" (each). Condition: Both in excellent condition. 700.00 - 900.00



### 3088115 19th c. gilt bronze solar lamp

Gilt bronze solar lamp, featuring a lotus design around the font and base, and stencil-decorated lotus design around shaft, on square base. Frame is encircled with prisms and holds a heavy, 1/3" thick frosted/clear glass shade which appears old and hand cut, but may not be original. 25"H. Unmarked. American or English, early 19th century. Condition: Modified for electricity. Some light abrasions and oxidation to metal surfaces. Some small chips to underside of shade where it sits in frame, 1/4" chip to top edge of shade, some minute scattered chips to prisms. Frame that holds prisms may not be original. 400.00 - 600.00



### 3088116 3 Brass Wedding Band Hogscraper Candlesticks

Group of three brass and metal wedding band hogscraper candlesticks including a pair with additional brass rings to the base (11 1/8" H) and one smaller example (7" H). American, 19th century. Condition: All with overall minor wear and oxidation. Tall pair of candlesticks with solder repair around wedding bands, indicating possible later addition. 300.00 - 400.00



### 3088117 Group of 4 Metal Candlesticks

Grouping of four metal candlesticks including three push-up hogscraper examples (11 2/8" H, 6 1/2" H) and one push-up tin example with rail 7 1/4" H). All 19th century. Condition: Hogscraper candlesticks overall general wear and oxidation. Tin example with overall general



### 3088118 Folk Art Portrait Miniature, American School, 1820

American School, early 19th century miniature portrait of a woman, watercolor on ivory. Subject has upswept dark hair and is wearing a white dress with square neckline and a coral necklace. Brown background. Unsigned. Framed in an oval rose gold frame with red leather backing and stenciled leather sides. 2-1/2" x 2" framed. Circa 1820. Condition: Minute flake/abrasion to left side in background, overall excellent condition. 800.00 - 1,000.00



### 3088119 Miniature Portrait, Anne Marie Louise d'Orleans

Continental School, 19th century, miniature watercolor painting on ivory, depicting a woman in 17th century attire playing a harp. Subject is identified en verso as Anne Marie Louise d'Orleans, Duchesse de Montpensier (b. 1627-d. 1693). Original gilt metal frame. 4-3/4" x 3-3/4". Condition: Frame is loose, portrait in excellent condition. 300.00 - 500.00



### 3088120 Christofle Silver-Bronze Centerpiece

Christofle Rococo style silvered bronze centerpiece bowl or jardiniere with removable central liner, signed on underside with Christofle mark and 2053225. Note: we have not attempted to polish this piece. 6-1/4"H x 17"W x 12"D. French, 19th century. Condition: Liner has old copper repair and florist foam glued to it. Exterior with oxidation. 500.00 - 900.00



### 3088121 2 Pair French Gilt Bronze Chenets

1st item: Pair Louis XVI style gilt bronze fireplace chenets (also known as fire dogs or andirons) with pineapple finials and round tapering feet, applied mask and foliate scroll decorations, iron supports. 8"H x 9"W x 2"D. Late 19th century. 2nd item: Pair of Louis XV style gilt and patinated bronze chenets, pierced scroll designs with applied figures of cherubs or putti playing with dogs. Iron supports. 6"H x 8"W x 7"D. Late 19th century. Condition: 1st



September 12-27, 2013 iGAVEL 9/12/2013-9/27/2013

item: some possible replaced screws, overall good condition. 2nd item: one chenet missing its iron support, one replaced screw. Both with minor oxidation. 600.00 - 900.00

### 3088122 3 Decorative items inc. Coromandel Box, Baccarat b

1st item: Victorian Coromandel box or small trunk with hinged, domed top and brass fittings. Lined with tooled leather and decorative paper. 6"H x 8-1/2"W x 4-1/2"D. Last half 19th century. 2nd item: Baccarat glass perfume or scent bottle, signed on base. 5"H. First half 20th century. 3rd item: Magnifying glass with hand painted porcelain handle. The tip is painted with a scene of a nude woman and cherub; the handle with a scene of a woman and fishing pole holding out a basket of fish to a cherub. Glass is likely a replacement. 10-1/4"L. Continental, 19th century. Condition: 1st item: Some light scratches, lacking key. 2nd item: excellent. 3rd item: glass is slightly loose, some wear to handle. 300.00 - 350.00



### 3088123 Cast Iron Lion Hole Punch and Bank

2 Victorian Cast Iron Desk items. 1st item: Cold painted cast iron figural hole press in the form of a seated lion, the drill extending from his open mouth, with bronze handle and wood knob. 6"H. 2nd item: Cast Iron still bank in the form of a standing lion, traces of original paint. 4"H. Late 19th century. Condition: General wear. 500.00 - 700.00



### 3088124 Papier Mache Tray, King Charles Spaniel

Lacquered papier mache tray on later ebonized custom stand. Oval tray has gilt stenciled border and inlaid mother of pearl ornaments; the center features a painted scene of Pekinese dog. 20"H x 29-1/2"W x 24"D. English, late 19th century. Condition: 3 areas of chipping (about 3/4" each) on underside of tray. Some scattered small abrasions and 3 areas of chipping to top surface (largest 1/4"). Few areas of possible repaint to stenciled rim. Dog image is unaffected and in very good condition. 700.00 - 800.00



### 3088125 Gilt Lacquer Chinoiserie Sewing Box with Contents

19th century gilt lacquer ladies work box, filled with ivory needlework implements. Octagonal form box raised on gilt feet, decorated with Chinoiserie designs of figures, landscapes and florals, including a tea ceremony depicted on the top panel. Hinged lid opens to reveal 28 ivory sewing implements in an ivory fitted interior, including two lift top compartments also decorated with Chinoiserie designs. Ivory implements include thimble, thread holders, bobbins, and clamps, many with intricate carving. A drawer below is fitted for inkwells and has a surface that can lift up for writing or painting. Two brass side handles. 6"H x 14"W x 11"D. Probably Chinese, 19th century. Note: this item contains a substance which is protected and restricted in the United States and by international convention and can only be shipped within the United States. Please refer to our Terms and Conditions, clause 10. Condition: Overall excellent condition. Minor wear/scratching and small age cracks to lacquer, small chip on one paw foot. Lacking key and inkwells. 1,000.00 - 1,600.00



### 3088126 Chinese silk embroidered dragon badge & tray

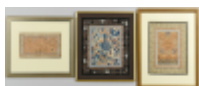
Framed Chinese embroidered dragon badge and smaller tray with embroidered insert. 1st item - Chinese woven badge with silk and metallic thread embroidery depicting a five-toed Imperial dragon surrounded by clouds, bats, and flaming pearls. Silk border. 18" x 25" sight, 19 1/4" x 26 3/4" framed. Qing dynasty. 2nd item - Chinese carved rectangular wooden carved tray with silk foliate and floral embroidered insert to base. Wooden tray has pierced foliate carving on the sides and a paneled wooden bottom. 20 1/4" length x 4 3/8" width x 1 1/4" height. Qing dynasty. Provenance - descended through a Chattanooga, Tennessee family of missionaries that left China during the Boxer Rebellion. Condition: 1st item - overall very good condition with some slack in silk border in upper left corner. 2nd item - lower half of pierced carving missing on one side of tray, embroidery in overall very good condition. Condition: 1st item - overall very good condition with some slack in silk border in upper left corner. 2nd item - lower half of pierced carving missing on one side of tray, embroidery in overall very good condition. 400.00 - 600.00



September 12-27, 2013 iGAVEL 9/12/2013-9/27/2013

**3088127 3 Chinese Forbidden Stitch Embroideries**

Lot of three framed Chinese "Forbidden Stitch" embroideries, all on silk ground. Two have metallic thread highlights; third has finely embroidered bat symbols. All float mounted on good mats and framed in contemporary frames. Sizes: 15" x 11-1/2" (24" x 18" framed), 17" x 14" (20" x 18" framed), and 7" x 12" (17-1/2" x 20-1/2" framed). Late 19th to early 20th century. Condition: Overall very good condition. 12" x 7" embroidery has small area where border has come loose. 17" x 14" embroidery (blue on mauve background has possible light stain at right lower corner. 300.00 - 400.00

**3088128 Chinese Silver Box & Asian Bronze Incense**

1st item: Chinese silver box in the form of a miniature garden seat, with raised Shou symbol on top and chased knots on sides. Chinese hallmark on base. 2"H. 19th century. 2nd item: Asian gilt bronze incense burner with foo dog on top and flowering branch form handles. 5"H x 7"W x 2"D. 20th century. Condition: Item 1: Several scattered dents. Minute hole in side of lid and small possible repair near bottom edge. Item 2: Minor wear. 200.00 - 300.00

**3088129 Asian Iron Hexagonal Vase w/ Silver & Gold Inlay**

Asian iron hexagonal shaped vase with gold and silver inlaid decoration. Each panel depicts an animal including cranes, deer, pheasants, and tigers. 6" H. 19th century. Condition: Some oxidation to metal. 200.00 - 400.00

**3088130 Meiji Mixed Metal Vase, Signed**

Signed Japanese mixed metal vase, bronze with inlaid silver and gold metal decoration depicting a rooster perched on the branch of a tree. Signed on the side and base. 6 1/4" H. Meiji period, early 20th century. Condition: Very good condition. 400.00 - 600.00

**3088131 3 Japanese Bronze & Cloisonne Items**

Grouping of Japanese bronze items and Sato Cloisonne vase, total 3 items. 1st item - Japanese bronze tsuba with leaf and egg plant design, background with circular dimples. 2 1/2" x 2 3/8". 19th century. 2nd item - Japanese bronze spherical vase, lighter patinated band around the midsection of the vase, signed base. 3 1/4" H. 20th century. 3rd item - Sato Japanese Cloisonne vase with floral design and red dimpled background. Marked silver base rim, "Japan Sato Cloisonne". 3 3/4" H. 20th century. Condition: All three items in overall very good condition. 250.00 - 350.00

**3088132 Asian Bronze Horse Sculpture**

Asian bronze sculpture depicting a galloping horse, unmarked. 12" H x 15 1/2" W. Early to mid 20th century, Condition: Overall very good condition with nice patina. 300.00 - 400.00

**3088133 Carved Asian Ivory Fisherman Okimono**

Carved Asian ivory figure of a fisherman holding a fishing rod and four fish. Mounted atop a stained wood stand. 9-1/2"H, 11-1/4" H including base. Japanese, Meiji period (late 19th century). Note: this item contains a substance which is protected and restricted in the United States and by international convention and can only be shipped within the United States. Please refer to our Terms and Conditions, clause 10. Condition: Excellent condition with some age discoloration. 300.00 - 375.00

**3088134 Asian Ivory Figure on Horseback**

Carved Asian ivory figure depicting a scholar on horseback. Artist signature on the base. Original bill of sale included. 8 1/2" H. Early to mid 20th century. Note: this item contains a substance which is protected and restricted in the United States and by international convention and can only be shipped within the United States. Please refer to our Terms and Conditions, clause 10. Condition: Very good condition. 200.00 - 400.00



September 12-27, 2013 iGAVEL 9/12/2013-9/27/2013

**LOT #**

300.00 - 500.00

**3088135 Asian Gilt-filigree Bracelet**

Gilt-silver filigree bracelet with carved faux ivory medallions framed by faux coral beads, 7-1/4" L x 2-1/8" H, 5 oval links, faux carved ivory and faux coral beads, marked SILVER on clasp. Condition: Overall very good condition. Some faux coral beads missing. 150.00 - 250.00

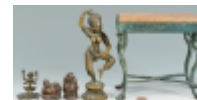
**3088136 Ivory Mah Jongg Set, c. 1925**

Early 20th century Chinese Mah Jong set, handcrafted ivory and bamboo tiles, wind discs and counters with hand etched and polychomed designs. Pieces are housed in a mahogany box with brass mounts and low relief carved design on sides, having five drawers, each with ivory pulls. Drop down front is marked inside: "Made in China" with patent date of 1923. Also included is the original instruction book with instructions in English and copyright date of 1923. Box measures 7"H x 7-3/4"W x 8"D. Also included are wooden tile racks. Note: this item contains a substance which is protected and restricted in the United States and by international convention and can only be shipped within the United States. Please refer to our Terms and Conditions, clause 10. Condition: Drop down front is somewhat loose in frame when open, otherwise excellent condition. 300.00 - 350.00

**3088138 5 Small Decorative Bronze Asian Items**

1st item - Bronze miniature table or stand with rouge marble inset top over a guilloche frieze and four figural legs in the form of dog heads and feet, joined by an X form stretcher.

Oxidized with a few scattered dings. 5-1/3"H x 6"W x 3-1/2"D. 19th century. 2nd item: Indian Bronze sculpture of Parvati, 6"H. 19th century. 3rd item: Indian brass or bronze figure of a deity on a frog, 2"H. Early 20th century. 4th and 5th items: Two Japanese bronze figural letter seals, 1-1/2 to 2"H. Late 19th century. Condition: All items in very good condition except where noted. 300.00 - 400.00

**3088139 6 Chinese Cloisonne Items**

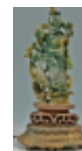
Grouping of six (6) Chinese cloisonne items including a pair of black ground vases with floral decoration (7 1/4" H), a pair of double gourd vases with dragon decoration (6 1/2" H), a smaller double gourd vase with bird and floral decoration (3 1/2" H) and a covered round box with vignettes of young boys (3 1/8" H). All items 20th century. Condition: One of the dragon decorated vases with two dented areas. All remaining items very good condition. 300.00 - 400.00

**3088137 4 Antique Ivory Items: magnifiers, tusk bracelet,**

1st item: Large patinated African elephant ivory tusk bracelet, 1-1/3"h x 4-3/4" w x 4"D. 19th century. 2nd item: Magnifying glass with ivory handle and Aesthetic Movement/Japanese style sterling silver overlay, marked "sterling." 11-1/2"L. Circa 1900. 3rd item: Magnifying glass with bone handle having a relief carved image of a lady's head and silverplated top mount. 9"L. Circa 1900. 4th item: 28 hardwood dominos with ivory faces, each 1-1/2"L. Circa 1900. Note: this item contains a substance which is protected and restricted in the United States and by international convention and can only be shipped within the United States. Please refer to our Terms and Conditions, clause 10. Condition: Age cracks to ivory and bone, glass elements on magnifying glasses are likely replaced. Couple of minor chips to dominos.

**3088140 Asian Carved Jade Figural Lamp**

Asian carved jade female figure with bird, holding a lotus blossom, atop a hardwood base which is mounted to a metal stand wired as a lamp. Brass and jade lamp finial. Figure measures 6-5/8" H. Total height is 21-1/8". Late 19th/Early 20th century, Condition: Figure in overall very good condition. Some oxidation to metal of lamp. Condition: Figure in overall very good condition. Some oxidation to metal of lamp. 300.00 - 350.00





September 12-27, 2013 iGAVEL 9/12/2013-9/27/2013

**LOT #****3088141 Chinese Celadon Green Carved Jade Disc w/ Stand**

Chinese celadon green jade disc with carved Shou symbol and bats. Fitted with a wooden stand. Disc measures 2 1/4" dia. 4 3/4" H with stand. Early 20th century. Condition: Excellent condition. 200.00 - 300.00

**3088142 Chinese White Jade Carving**

Chinese white jade carving depicting magic fungus with some russet highlights. 2 1/4" L. Early 20th century. Condition: Excellent condition. 300.00 - 350.00

**3088143 2 Carved Chinese Jade Buckles**

Two carved Chinese jade belt buckles, one large light celadon rectangular form with archaic carved corners and openwork, central floral carving on one side and Chinese letters on the opposing side (2 1/2" H x 3 1/2" W) and one small spinach green Ju-i head form belt buckle (1" H x 1 3/4" W). Late 19th/Early 20th century. Condition: Both overall very good condition. 350.00 - 450.00

**3088144 2 Jade Chinese Buckles, 1 White Jade**

Two Chinese jade carved belt buckles, one white jade with incised landscape scene with figure to one side with symbols to the other and openwork carving (2" H x 2 1/2" W) and the other pale green with foo dog corners and incised symbols to each side (2" H x 2 3/8" W). Late 19th/Early 20th century. Condition: Both excellent condition. 300.00 - 350.00

**3088145 2 Carved Chinese Jade Plaques**

Two carved Chinese jade plaques, one circular with openwork design depicting a bird amongst flowers (2 1/8" dia.) and one openwork rectangular form with double joy symbols to the center (2" H x 1 1/2" W). Late 19th/Early 20th century. Condition: Circular plaque very good condition. Some chips to top of rectangular plaque. 300.00 - 400.00

**3088146 Grouping of 3 Asian Items**

Grouping of three Asian items including a Japanese bronze Kanban shop sign (5 3/4" dia.), miniature Chinese carved ivory loom for making silk tassels (cylinders measures 3 1/4" L), and a floral carved ivory pendant (2 1/4" L) with ivory ojime bead. All items early 20th century. Note: this item contains a substance which is protected and restricted in the United States and by international convention and can only be shipped within the United States. Please refer to our Terms and Conditions, clause 10. Condition: Wear to metal of shop sign. Silk threads to loom not completely attached. Pendant very good condition. 400.00 - 600.00

**3088147 4 pcs. Asian Silver plus Whiting beaker**

Grouping of Asian silver. 1st item: a Chinese silver vase with engraved bamboo and floral decoration, marked on base (6 1/8" H). 2nd item: a Japanese silver teapot with cherry blossom engraving and floral finial (unmarked, tested as silver), engraving verso: "To Mr. and Mrs J.C. Root / From KRD Female Staffs" . 3rd and 4th items: Two sake cups with floral and bird decoration and gilt interior wash, marked on base (1 3/4" H). 5th item: A Whiting & Co. sterling silver beaker (3 7/8" H). 19.285 total troy ounces. Condition: Vase with scattered denting. Teapot with scattered denting. One sake cup with shallow dent to base. Beaker overall very good condition. Condition: Vase with scattered denting. Teapot with scattered denting. One sake cup with shallow dent to base. Beaker overall very good condition. 350.00 - 450.00

**3088148 Chinese Famille Rose Charger**

Chinese famille rose charger depicting a landscape with prunus, flowers, and phoenix. Four iron red bat symbols en verso. Unmarked. 14" Diam. Early 20th century. Condition: Small slight glaze imperfections and wear to gilt trim. 300.00 - 350.00



September 12-27, 2013 iGAVEL 9/12/2013-9/27/2013

**LOT #****3088149 Chinese Hawthorne or Prunus Porcelain Jars**

Three Chinese blue and white Hawthorne or Prunus decorated jars including a larger lidded baluster form of the late 18th/early 19th century and two smaller 19th century jars depicting blossoming prunus (plum) with a blue background. Larger lidded baluster jar with unmarked base, two smaller vases with blue concentric ring marks. Height of baluster jar with lid 7 3/4". Smaller jar with lid 4 3/4" height. Provenance - descended through Chattanooga, TN family of missionaries that left China during the Boxer Rebellion. Condition: Lid missing to one small jar. Overall excellent condition 450.00 - 550.00

**3088150 Japanese Woodblock by Yamakawa Shuho**

Japanese woodblock print by Yamakawa Shuho (1898-1944), titled "Autumn" depicting a bijin attired in a red robe with falling leaves in the background. From the 1927 series "Four Images of Women". Artist name and seal mid-right margin, publisher seal and titled left margin. Unframed. 15 1/4" H x 10 1/4" W. Condition: Overall very good condition. Some toning to perimeter. 300.00 - 350.00

**3088151 Three Japanese Woodblock Prints**

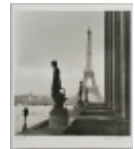
Grouping of three (3) Japanese woodblock prints. 1st and 2nd items: Two (2) woodblocks by Kawase Hasui (Japanese, 1883 - 1957) titled "Rainy Evening at the Yanaka Pagoda, Tokyo" and "Temple and Cherry Blossoms", both with the artist name and seal lower right, publisher seal lower left, and titled left margin. 15 1/4" H x 10 1/4" W. 2nd item: Japanese woodblock depicting pelicans resting by water. Red seal lower right margin. Signature and red seal mid and lower left. 10 3/4" H x 15 1/2" W. Unframed. All 20th century. Condition: 1st and 2nd item: First print overall very good condition. Second print with wear and damage to lower left margin and lower middle margin. 3rd item: Overall toning. Losses to upper left corner. Two small tears right margin. 250.00 - 350.00

**3088152 Two Japanese Woodblocks**

Two Japanese woodblock prints. (1) Japanese colored woodblock print of geishas gathering flowers by FUSATANE, active 1849-1870, sight: 13-1/4" H x 8-5/8" W, Framed: 17-3/4" X 12-3/4" W. (2) Japanese woodblock print from a theater program. Late 19th century. Sight: 13-3/4" H x 8-5/8" W, Framed: 18-1/4" H x 12-3/4" W. Condition: Overall very good condition. 200.00 - 250.00

**3088153 Lot 3088153: Ed Clark Signed Photograph, Eiffel To**

Edward Clark (Tennessee, 1912-2000) black and white photograph, The Eiffel Tower, 1946 (reprint of cover image for Life Magazine). Signed lower right in ink and dated 1946. 20" x 24". Biography: Born in Nashville, photographer Ed Clark began working for The Tennessean Newspaper. Life Magazine made him a stringer in 1936. His famous 1942 photo of Alvin York registering for the draft brought an official job offer, but he refused to leave Nashville as he felt it was a better place to raise his young sons. In 1945, he agreed to be temporarily assigned to the Paris offices and shot a series of photos of that city, including this image. During his career working for Life and several other magazines, he captured images of racial discrimination, Hollywood celebrities, and several presidents. Condition: Mounted to board. Light minor wear and a couple of small creases at outer edges of margins. Condition: Mounted to board. Light minor wear and a couple of small creases at outer edges of margins. 300.00 - 400.00

**3088154 Hector Xavier Ink Drawing dated 1962**

Ink drawing on paper by Hector Xavier (Mexico, 1921 - 1994) titled "Valle de Majo" depicting a seated man with hat and walking stick. Signed, titled, and dated 1962 lower right. 12 5/8" H x 9 3/4" W. Condition: Unframed. Overall toning with some acid burns from old matte. 200.00 - 400.00



September 12-27, 2013 iGAVEL 9/12/2013-9/27/2013

**LOT #**

5,500.00

**3088155 Lilli Palmer, Two Cubist Oils**

Two abstract cubist oil on canvas paintings by Lilli Palmer (1914-1986). 1st item: "Spanische Landschaft III" (Spanish Landscape 3), titled in German en verso, signed and dated Palmer '72. 35-1/2" x 21-1/2" sight, 36-1/2" x 22-1/2" framed. 2nd item: Untitled abstract painting, signed "L" and titled Oct/64 en verso. 38" x 15" sight, 39" x 16" framed. Both with whitewashed wood frames. Biography: The daughter of German surgeon and an Austrian actress, both Jewish, Lilli Palmer fled Nazi Germany in 1932 and went to Paris, where she became a dancer at the Moulin Rouge. She moved to America after her 1943 marriage to actor Rex Harrison and continued careers in both acting and painting. She exhibited mainly in Europe, including at the Arthur Tooth Gallery in London, where these works were acquired. Condition: 1st item: three 1/4" flakes in upper center and lower center. 2nd item: Light scratching to a 3" area at the lower center edge of the canvas. 1,800.00 - 2,200.00

**3088156 Sonia Lewitska Oil on Canvas Still Life**

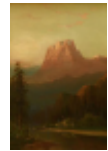
Sonia Lewitska (Ukrainian/Polish, 1882-1937) oil on canvas still life depicting a table with glass compote and plate of fruit. Signed lower left S. Lewitska. Housed in a gilt wood frame. Sight: 21 3/8" H x 17 3/4" W. Framed: 30" H x 26 1/4" W. Early 20th century. Biography: Sonia Lewitska, sister of the political writer Modest Lewitsky (1866-1932), studied at the school of S. Svtoslavsky in Kyiv before moving to Paris by 1905. Although well known as the paramour of French cubist artist Jean Marchand, she also gained recognition for her still lifes, landscapes, and fairy-tale scenes painted in the tradition of Ukrainian folk art. She also created woodcuts and illustrated the books Evenings on a Farm near Dikanka by N. Gogol, The Chronicle of Joinville, The Serpent by P. Valery, and The Little Garden by Gaufroy Le Louche. Her works are at the Musee National d'Art Moderne (Centre Pompidou) in Paris and at the Albertina in Vienna. Condition: Overall very good condition with some cracklure to canvas. Black light inspection reveals no evident imperfections. Condition: Overall very good condition with some cracklure to canvas. Black light inspection reveals no evident imperfections. 4,500.00 -

**3088157 19th c. French School Painting, Girl w/ Cat**

French School, late 19th century, oil on canvas painting depicting a girl sitting on a chair with a cat in her lap. Later carved gilt washed frame. 25" x 21" sight, 28" x 23" framed. Condition: Some rubbing/losses to canvas at the margins, upper left and lower center. 300.00 - 400.00

**3088158 Frederick Schafer Oil on Board, El Capitan**

Frederick Ferdinand Schafer (Germany/California, 1839 - 1927) oil on canvas laid on board depicting fisherman at sunrise in Yosemite Valley with El Capitan in the background. Signed lower right "F. Schafer". Sight - 23 1/2" H x 15 1/8" W. Framed - 27 3/4" H x 19 3/4" W. Late 19th century. Biography: Born in Germany, Schafer immigrated to the U.S. at the age of 37 and quickly went West. He specialized in painting dramatic Western landscapes and had studios in San Francisco, Alameda and California. His work is represented in a number of western museums including the Yosemite National Park Museum. Condition: Canvas laid down on board. Painting in overall excellent condition. Frame with wear to edges and separation to lower corner joints. 1,000.00 - 2,000.00

**3088159 Raoul De Longpre Floral Still Life Painting**

Raoul Maucherat De Longpre (French, 1859-1911), Still Life with pink roses and lilacs, gouache on paper, signed lower right. Gilded, bead molded frame. Sight: 21-1/4" H x 27-1/2" W, frame: 28-1/2" H x 35-1/2" W. Provenance: Property of a Maryville, TN collector, inherited from his mother. Biography: Best known for his floral still lifes, Raoul DeLongpre was born into a family of artists and was painting flowers on fans for a Paris firm by the age of twelve. His scientific studies of flowers exhibit a high degree of accuracy. Lilacs (which symbolized youthful innocence and first love) were his favorites. At age 21, he began exhibiting in the Paris Salon. Whether or not he traveled to America is unknown, but several of his paintings made their way into private and museum collections



September 12-27, 2013 iGAVEL 9/12/2013-9/27/2013

here, likely through the efforts of his brother, fellow floral artist Paul De Longpre. Condition: Overall very good condition with small tear to upper right margin. Minor scratches and some gold color worn on frame. 3,000.00 - 4,000.00

### 3088160 Louise Nevelson Etching and Aquatint, "Magic Garde

Louise Nevelson (American 1899-1988) etching and aquatint titled "Magic Garden". Pencil signed lower right, numbered 10/20 lower left and titled in the center margin. Float mounted on matte paper and housed in a contemporary chrome frame. Image: 5-3/4" H x 8-5/8" W. Sheet: 29-5/8" H x 22" W. Overall: 32:1/4" H x 24-1/4" W. Condition: Some toning to matte paper and very light oxidation to white background. Otherwise overall very good condition. 600.00 - 900.00



### 3088161 Reuben Nakian, Leda and Swan

Reuben Nakian (American, 1897-1986), "Leda and the Swan," aquatint and chine colle on Richard de Bos handmade paper. Pencil signed in lower margin and numbered XXI/XXV. Accompanied by copy of 1979 letter from Hugh MacKay Fine Arts, New York stating it is one of a total edition of 99 and the plate has been cancelled. 25 of the prints, including this one, are considered part of the "deluxe" edition because they were pulled on De Bas paper in sanguine ink. Plate size 13-1/2" x 16-1/2", 20" x 24" overall. Condition: Scattered light, small areas of foxing, primarily to margins. 400.00 - 500.00



### 3088162 Marcel Vertes Circus Lithograph

Marcel Vertes (French, 1895-1961) colored lithograph "Spontaneite" from Le Cirque Portfolio, 1947, pencil signed and numbered 80/250. Floated on a black mat and framed in a giltwood molded frame. Sheet: 21-7/8" H x 17" W. Frame: 37-1/2" H x 31-1/2" W. Condition: Light toning at edges, a 1" tear at right edge. 200.00 - 250.00



### 3088163 Turkey Platter with 12 plates, Flow Blue

Large flow blue turkey platter and twelve matching dinner plates, marked en verso Villeroy & Boch Dresden, V.N. 2217 Made in Germany, also with various impressed marks. Platter measures 20-1/2" x 15-1/2", plates measure 10" diameter. Early 20th century. Condition: Platter is in very good condition with some light crazing, a few small, light stains (largest 1/4" diameter). Plates are in excellent condition with a few fleabites to some edges. 700.00 - 900.00



### 3088164 Lot of British ceramics, 8 pcs.

18th century teabowl and saucer with cobalt and gilt borders, attributed to Worcester (Barr Flight Barr period); English Imari pattern hard paste porcelain teacup and saucer, unmarked, probably Worcester circa 1820; 2 bone china saucers with gilt decorated blue borders, attributed to Spode circa 1830; Soup bowl with hand painted Gaudy Welsh style decoration, attributed to Coalport, mid 19th century; Soup bowl marked Davenport Stone China, Indian Tree pattern, mid 19th century; 1 Imari pattern dinner plate marked Mason's Ironstone China, 10" diam, mid 19th century, and 1 Wedgwood-style Jasperware mug or tankard with scenes of men drinking and playing cards, impressed mark 3918. Condition: All items with some minor wear to decoration; Imari saucer has some light central crazing and staining. 200.00 - 300.00



### 3088165 2 19th century enamel boxes inc. Veuve Perrin

Two enamel boxes with hinged tops, both 19th century. 1st item: Rectangular box with music themed decoration of violin and harp with flowers, 1-1/2"H x 4" w x 2"D. 2nd item: French Kidney shaped box with pink flowers on a pale pink background. Conjoined VP (Veuve Perrin) mark on underside. 1-1/4"H x 2-3/4" W x 1-3/4"D. Condition: Both in very good condition. 200.00 - 300.00



September 12-27, 2013 iGAVEL 9/12/2013-9/27/2013

**LOT #****3088166 Seth Thomas Figural Mantle Clock**

Seth Thomas figural mantel clock depicting the Greek goddess of the Harvest, Demeter seated with wheat and a sickle above the white enamel Roman numeral clock face on an ornate base. Works marked "Seth Thomas & Sons, Thomaston, CT". Retains the winding key. 17 1/2" H x 15 3/4" W x 7 3/8" D. Early 20th century. Condition: Patination to bronzed finish. Some losses to clock face. Works not tested. 300.00 - 350.00

**3088167 2 Gilded Watch Holders**

Two gilded watch holders. 1st item: Ladies pocket watch stand, gilt brass and copper rectangular footed tray surmounted by a scrolled frame with enameled figural flowers, 6"H x 11"W x 6"D. 2nd item: Ormolu dore bronze watch stand, circular form with classical egg and dart, laurel and bead decorated exterior, marked Brevete SGD.G. 2"H x 4" Diam. Both French, circa 1880. Condition: 1st item: some wear and repainting to frame, one foot repaired. 2nd item: scattered small spots of oxidation and wear. 500.00 - 700.00

**3088168 Gilt Bronze Thread Holder w/ Bird Finial**

Gilt bronze thread holder with "sewing bird" finial and various arms for holding spools, on ebonized base. 7"H. Continental, mid to late 19th century. Condition: Replaced screw, otherwise good condition. 200.00 - 250.00

**3088169 Pr. Bronze Satyr Heads, Candlesticks, and Table Kn**

Lot of 3 Satyr themed objects. 1st item: Pair of gilt metal candlesticks in the form of satyrs atop monsters, lifting coiled metal candle holders. 4-1/4"H. 2nd item: Pair of Bronze satyr head furniture mounts, 4" H. 3rd item: Bronze satyr caryatid figure, likely a furniture knee mount, 10"H. All probably Continental, circa 1870. Condition: All items with scattered wear and minor oxidation, overall very good condition. 350.00 - 450.00

**3088170 2 Prs. Neoclassical French Bronze Candlesticks**

1st item: Pair of Neoclassical gilt bronze candlesticks, floral festooned bobeches over plain hollow shafts, bands of egg and dart and floral decoration at lower edges, acanthus tripod bases with paw feet atop plinths. 12"H. Continental, circa 1830. 2nd item: Pair of Neoclassical gilt and patinated bronze candlesticks, acanthus bobeches over tripod bases with repeating acanthus decoration atop plinths, 13"H. Continental, circa 1830. Condition: 1st item: dents and some small separations to shafts, oxidation. 2nd item: some scratches and oxidation, overall good condition. 350.00 - 450.00

**3088171 Four English Brass Candlesticks**

Four English brass candlesticks, 2 with square drip bases of similar form but bases of slightly different size (5-3/4" H x 4-3/8" x 4-1/4" and 5-5/8" H x 4-1/8" W sq) and 2 with octagonal drip bases, one with a central ring turning (5-1/4" H), the other with an "economy" hole (5-7/8" H). Late 17th to early 18th century. Provenance: Estate of Margaret Wemyss Connor of Nashville, TN. 300.00 - 400.00

**3088172 4 Cigar Items inc. figural lighters**

Four cigar related items. 1st item: Cold painted bronze lighter in the form of a bulldog, moderate paint retention. 1-3/4"H x 2-1/2"L. 2nd item: Figural bulldog lighter, spelter with bronze finish, 4"H. 3rd item: Gold metal telescoping cigar pick with engraved chevron decoration, unmarked, 2-1/2"L. 4th item: Silverplated humidor lid with figural finial of a satyr or devil holding a pipe, together with a contemporary associated reticulated basket. Condition: Lighters have some surface wear and do not appear functional. Satyr lid shows wear and does not fit the basket. 300.00 - 400.00

**3088173 3 Figural Inkwells**

1st item: Empire style gilt metal inkwell with angel and eagle finial over a body with three ram head caryatids on hoof feet, atop a circular rouge marble or hardstone base, 7"H. 2nd item: Bronze square inkwell with pig finial atop lid,





September 12-27, 2013 iGAVEL 9/12/2013-9/27/2013

porcelain ink insert, decorative pierced body on four winged scrolled feet. 4"H. 3rd item: Classical style inkwell with eagle finial on top, lifts to reveal interior with glass insert and star pierced sander, on an acanthus decorated plinth base. Small tear to sander top, eagle slightly loose. 3"H. Condition: All with minor wear and oxidation but overall good condition except where noted. 400.00 - 600.00

**3088174 6 Decorative Desk Items inc. Figurals**

1st item: Bronze desk or hotel bell, Art Nouveau style with figural flower finial, 4-1/4"H. 2nd item: Brass paper clip with caricature face, 2-1/2" x 2-1/4". 3rd item: Silverplated inkwell in the form of a fox holding an orb on circular base, 6"H. 4th item: Circular ivory trinket box with sterling silver lid and bottom, vacant monogram cartouche engraved on top. Couple of small dents to top. 1-1/2"H x 2-1/2" Diam. 5th item: Small Celluloid box with decoration of a Geisha playing a lute, on a faux tortoise background. Very good condition. 1/2"H x 1-3/4" Diam. 6th item: Victorian gold-filled lorgnette or folding glasses, long gold-filled handle with loop on end for suspension from a chatelaine, lenses with spots of magnification. Original leather case with wear and full separation. 5-7/8"L. All late 19th to early 20th century. Condition: All items with minor expected wear. 400.00 - 500.00

**3088175 2 Decorative Bronze Ornaments**

1st item: Silvered bronze newel post or finial in the form of an urn with Neoclassical decoration, excellent condition. 7-1/2"H. 2nd item: Green porcelain bowl in gilt bronze frame with winged griffin tripod legs, ring handles and circular lid with pine cone finial. Bowl not original to frame. Both late 19th to early 20th century. Condition: Item 1: Excellent. Item 2: Oxidation and surface wear to frame, one ring broken. 300.00 - 500.00

**3088176 Baroque Style Oval Mirror w/ Cherubs**

Continental baroque style oval mirror, ornately carved wooden frame with figural cherub supports on either side of an oval looking glass, 21"H x 14-1/2"W. Probably French, 19th century. Condition: Original surface may have been painted. Shrinkage cracks running full length of top and lower sides with scattered shrinkage elsewhere. 600.00 - 800.00

**3088177 Reading or Dictionary Stand**

Victorian dictionary or reading stand, mahogany book support on a telescoping brass stand, medial center shelf atop a tripod base with iron paw feet. Black porcelain casters. 56"H x 24"W x 15"D. English, possibly John Carter Company of London, circa 1880. Condition: Some wear/oxidation to brass shelf and iron feet, overall very good condition. 400.00 - 500.00

**3088178 Painted Escritoire or folding ladies desk**

Painted satinwood folding desk or escritoire. Rectangular hinged front with inlaid oval veneer, the contrasting veneer surrounding it decorated with painted vines and flowers, drops down to form a writing or painting surface with interior fitted for storage of inkwells and pens (1 inkwell retained). Interior is partially papered. Painted stretcher joins two Regency style painted downswept legs. Back surface covered in a tapestry style fabric. 47-1/4"H x 22"W x 17-3/8"D. English, probably third quarter 19th century. Condition: Overall good condition with expected wear: shrinkage to front panel, 2 long areas of patching to center front panel, wear to painting on feet with possible additional repainting. Some staining to upholstered back; upholstery on back is likely replaced. Some interior paper is peeling. Original hinges (one is loose). Some minor veneer chipping to front edge of drop down front (visible when front is let down). 800.00 - 1,200.00

**3088179 Chippendale style Cabinet on Stand**

Georgian mahogany silver or spice chest or collector's cabinet with oak and pine secondary woods. Box has flat top with beaded molding on three sides, a plain front door opening to reveal



September 12-27, 2013 iGAVEL 9/12/2013-9/27/2013

six short drawers and one long drawer, most dovetailed and lined in brown felt and having small brass knobs with ring pulls. Sits atop a stand with fret carved frieze on front and sides with gadrooned molding beneath, and four canted legs with chip carved corners, ending in low relief carved feet. Feet are joined by arched stretchers to a central disk with gadrooned edges. 48-1/2"H overall (box only, 15-3/4"H) x 11-3/4"W x 12-1/2"D. Probably English, early 19th century on a late 19th or early 20th century stand. Condition: Stand is later than box. One drawer has later plywood sides and bottom. Secondary woods are not consistent on the other drawers indicating some possible repairs to them as well. One glue block missing on stand. Three knobs are missing their ring pulls, one knob is missing entirely. Some stains to front door. Two stretchers loose. Lacks key. 400.00 - 600.00

**3088180 Mahogany Federal Field Bed, circa 1800**

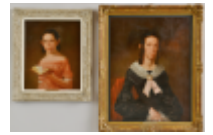
Mahogany four poster field bed with arched canopy. Headboard posts plain and tapered, with simple curved headboard mortised into them. Columnar posts at foot of bed feature reeded upper shafts over ring turned lower shafts and rectangular blocks to hold ends of rails, and baluster turned and tapered legs. Ends measure 61-5/8"H x 56-3/4"W. American, possibly Massachusetts, circa 1800. Provenance: the estate of Margaret Wemyss Connor, Nashville, Tennessee. 400.00 - 600.00

**3088181 Oval Pastel Painting signed Paulin**

19th century oval pastel portrait of woman (possibly Venus) leading a child, both attired in classical style dress with flowers. Oval giltwood frame with beaded molding. Signed R. or A. Paulin. Sight - 31 1/2" H x 25 1/4" W. Framed - 39" H x 32 1/8" W. Condition: 10-12" crease at left side. Frame has three missing beads and scattered abrasions and small cracks. 600.00 - 800.00

**3088182 Pr. Oil on Canvas Portraits, Hungerford family**

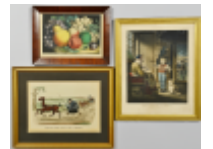
1st item: Oil on canvas portrait of Sarah Sophia Hungerford (Connecticut, b. 1830) daughter of William and Lucinda Hungerford. Shown as a young girl in a pink dress, holding an open book. Unsigned. Housed in a carved painted wood frame. Sight: 23-1/2" H x 19-3/8" W. Framed: 31" H x 27" W. Mid-19th century. 2nd item: Oil on canvas portrait of Lucinda Hart Hungerford (CT, b. 1804), wife of William Spencer Hungerford. Shown in a black dress with lace trim holding a lace handkerchief. Unsigned. Housed in a carved gilt wood frame. Sight: 35-1/2" H x 28-1/2" W. Frame: 42" H x 35" W. Mid-19th century. Condition: 1st item: Overall craquelure. Varnish loss and discoloring above head, 12 1/2" L. 2nd item: Overall craquelure. Blacklighting reveals repair in the upper forehead area. 800.00 - 1,200.00

**3088183 Currier & Ives Lithograph, New York Bay**

Currier & Ives colored lithograph titled "New York Bay". Sight - 16 1/4" H x 20 3/8" W. Framed - 24 1/2" H x 28 1/4" W. 19th century. Condition: Overall toning and foxing. Some cracks to frame joints. Margins have been trimmed. 400.00 - 450.00

**3088184 3 Currier & Ives Lithographs**

Three framed Currier & Ives colored lithographs, titles include "Fruits of the Golden Land" (Sight - 9 1/2" H x 13 1/2" W/Framed - 12 1/8" H x 16 5/8" W), "Laying Back Stiff for a Brush" (Sight - 11" H x 15 3/8" W/Framed - 17 3/4" H x 15 3/8" W), and "The Trial of Patience" (Sight - 19 1/2" H x 15 3/8" W/Framed - 22" H x 18 1/8" W). 19th century. Condition: 1st item: Overall toning. Tear to margin lower left. Water damage right margin. 2nd item: Overall toning with tear to lower right margin. 3rd item: Overall toning. Pinhole and water damage lower right. 300.00 - 350.00

**3088185 The Niles' Weekly & 4 others, 12 total**

1st grouping: Mixed lot of 8 leatherbound volumes of The Niles Weekly Register, Hezekiah Niles et. al., printed and published at The Franklin Press, Baltimore, 1813 to 1821.



September 12-27, 2013 iGAVEL 9/12/2013-9/27/2013

An important weekly magazine of the day containing news of America and the world concerning politics and economics, also reprints of public documents. Lot includes: Volume IV (4) March to September 1813, Volume V (5) September 1813 to March 1814, Volume IX (9) September 1815 to March 1816, Volume XI (11) September 1816 to March 1817, Volume XIII or Volume I of New Series (13) September 1817 to March 1818, Volume XVI or Volume IV of New Series (16) March 1819 to September 1819, Volume XVIII or Volume VI of New Series (18) March 1820 to September 1820, Volume XIX or Volume VII of New Series (19) September 1820 to March 1821. 2nd grouping: Four historical leatherbound books by Stanley, Whitehead, and Potter. 1st item: Through the Dark Continent or The Sources of the Nile around the Great Lakes of Equatorial Africa by Henry M. Stanley, containing maps of Africa and numerous engraved illustrations of fish, animals, tools, musical instruments and other items of African material culture. Published London by Sampson, Low, Marston etc. 1887 (6th edition). Tooled leather binding, bookplate and tooled leather name on front for All Saints School Bloxham (Cambridge Syndicate Examination Mid Summer 1889, awarded as prize to W.F. Chandler by The Governing Body). 2nd item: 1820 leatherbound copy of Whitehead's Poem on the Battle of Waterloo, by William Whitehead, published 1820 and printed by Thomas Davison, Whitefriars, for subscribers listed at the end of the book. Missing front free endpaper and half-title page. Extensive historical and biographical notes, rare. 3rd and 4th items: The Tragedies of Euripides in 2 volumes, translated by R. Potter. Printed for J. Mawman, C. Law and others, London, 1814. Provenance: the estate of Margaret Wemyss Connor, Nashville, Tennessee. 400.00 - 500.00

**3088186 1596 Geneva Bible New Testament, by Tomson**

1596 Geneva Bible New Testament, revised by Laurence Tomson (1539–1608) who was an English politician, author, and translator in addition to serving as the Personal Secretary to Sir Francis Walsingham (the secretary of state to Elizabeth I of England). The Epistle of this translation is dedicated to Sir Francis Walsingham and reflects Tomson's Calvinist theology. Printed at London by the Deputies of Christopher Barker. Rebound by Zaehnsdorf in



1912 and retains a remnant of the original dustcover and backcover and a previous owner's coat of arms. 9 3/4" H x 7 3/8" W. Note: The original printing of this version was printed in 1576, "In 1576, a revised form of the Geneva Bible was produced by Lawrence Tomson, Secretary to Sir Francis Walsingham (then Elizabeth's Secretary of State) and formerly lecturer in Hebrew at Geneva. This contains a few changes in the translation, the most characteristic being Tomson's pedantic rendering of the Greek definite article by "that" (e.g. Matt. 16.16, "Thou art that Christ"); but the chief difference is the introduction of an English translation of Theodore Beza's summaries of doctrine and exposition of phrases in Beza's Latin Bible. In 1598, the annotations on the Book of Revelation by Francis Junius, a Huguenot divine, were introduced into the Geneva Bible." —Bruce Metzger, "Book Notes," Theology Today 46/4 (January 1990), p. 463. Condition: Rebound early 20th century. Missing the original title page. Interior toning to pages and some chipping. Loss to bottom portion of page six. Some pages repaired with blank paper. Wear and some losses to spine and edges. 450.00 - 600.00

**3088187 14 pcs Baccarat Stemware, Montaigne Pattern**

Set of fourteen Baccarat crystal champagne goblets or sherberts, Montaigne pattern, optic bowl with smooth stem, signed on underside. 4-7/8"H. Condition: 2 with rim chips, 1 with crack. 250.00 - 350.00

**3088188 Grouping of Waterford Cut Crystal Table Items**

Grouping of Waterford cut crystal table items, fourteen (14) pieces total, including Serving bowl, pitcher, cream pitcher, sugar dish, covered sugar dish, sectional serving plate, four (4) condiment dishes, one (1) hear shaped dish, long asparagus dish and two (2) small bowls. Ranging in size from 2" H x 3" W to 6" H. Condition: Slight chip to base of asparagus dish. Remaining pieces in excellent condition. 250.00 - 350.00



September 12-27, 2013 iGAVEL 9/12/2013-9/27/2013

**LOT #****3088189 Grouping of Waterford Crystal Decorative Items**

Grouping of six (6) Waterford cut crystal decorative items including three (3) vases, one (1) low bowl, one (1) covered bowl and one (1) footed dish. All pieces signed. Ranging in size from 3" H x 7" W to 7 1/2" H x 6 3/8" W.

Condition: All pieces excellent condition.

300.00 - 400.00

**3088190 Grouping of Waterford Cut Crystal Items**

Grouping of Waterford cut crystal table items, eleven (11) total, including a Millenium champagne bottle coaster, center bowl, covered jar, spill vase, single candlestick, pair of tall candlesticks, and a pair of low candlesticks with removable hurricane shades. Ranging in size from 2 3/8" H to 8 3/8" H. Condition: All pieces excellent condition. 250.00 - 350.00

**3088191 15 Waterford Lismore "Old Fashioned" Glasses**

15 Waterford cut crystal "Old Fashioned" glasses, Lismore pattern. 3-3/8" H. Condition: All pieces excellent condition. 250.00 - 350.00

**3088192 Grouping of 4 Crystal Bowls, 3 Orrefors**

Grouping of four crystal bowls including a star form Orrefors bowl, a flared and shaped Orrefors center bowl, a square form Orrefors bowl, and a Rogaska cut crystal center bowl. All signed on the base. Ranging in size from 4" H x 6" dia. to 7" H x 10" dia. Condition: All excellent condition with minimal wear to bases. 250.00 - 350.00

**3088193 Silver mounted burlwood Mazer Bowl**

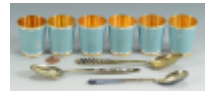
Rare burlwood Mazer or drinking bowl, circular with silver rim, lining and decorative foot. Unmarked, possibly Russian or Chinese. 2"H x 4"Diam. 18th century. Condition: Scattered small dents and light wear. 300.00 - 375.00

**3088194 24 pcs assorted world Silver**

Assorted world silver. Includes 6 American coin silver teaspoons with fiddle handles, retailer mark for S. Richmond, pseudohallmarks for Hall, Hewson and Brewer of Albany, New York; 1 pair coin silver sugar tongs, unmarked with multiple repairs; 1 Coin silver tablespoon, maker's mark for John C. Farr (working Philadelphia 1825-1852); 1 English sterling footed salt cellar with repousse decoration to body and 1 beaded edge salt spoon, the cellar marked RH (Probably Robert Harper, London, 1862-1863); 1 Finnish or Swedish pastry server with hollow handle, 11"L; 2 Danish demitasse spoons; 1 Danish egg spoon; 1 Finnish/Swedish demitasse spoon; 1 twist handle egg spoon, possibly Belgian; 1 Massachusetts souvenir spoon; 1 American Blackington sugar sifter spoon; 1 sugar sifter spoon with enamel decoration marked Sterling 925/1000; 1 sugar sifter spoon marked Prima NS; 1 large Continental unmarked pierced ladle; 1 horn handled ladle with pierced silver bowl, unmarked (possibly American); 1 silverplated sugar sifter spoon, 1 silverplated Memphis Brys spoon. Total weighable silver: 12.29 oz troy. Condition: Most pieces monogrammed, tongs have multiple repairs. 300.00 - 375.00

**3088195 Enameled Silver and Copper Spoons, Cups**

1st item: Enameled Russian silver spoon with twist handle and polychrome faceted handle. Back of bowl is decorated with floral enameling. Marked with Kokosnik 84 mark and maker's initials EC. 5"L. 2nd item: Gold-washed spoon with yellow and blue enameled handle having a pattern of repeating ovals. Sickle in star mark, 916 on back of handle along with maker's mark, along with unidentified maker's mark. 5-2/3" L. 3rd item: Vermeil (gold washed) spoon with coffin style handle and blue and white enameling, marked with sickle in star mark, 845 along with unidentified maker's mark. 5-5/8"L. 4th item: Set of 6 gilded enameled copper cups with blue and white wave design, marked on base NOM 2C. Possibly Norweigan. Each 1-3/4" H. Condition: 1st item: Some abrasions to green enameling on handle. 4th item: one cup has a 1/2" area of loss to the enameling at the rim. Other items in very good condition with light oxidation. No attempts have been made to polish these pieces. 300.00 - 350.00



September 12-27, 2013 iGAVEL 9/12/2013-9/27/2013

**3088196 2 Russian Silver Kiddush Cups inc. Niello and 2 Sp**

1st item: Russian Niello silver beaker with engraved floral scroll design, marked 84 on rim and on base, additional marks for Moscow, maker's mark AK, assayed 1852 or 1882. 2-1/4"H. 1.63 oz troy. 2nd item: Silver Kiddush cup with alternating engraved flowers and village scenes. Kokosnik 84 mark for post-1908, mark for Israel Eseevich Zakhoder. 2-3/4" H, 1.835 oz troy. 3rd item: Two Russian Silver tablespoons or serving spoons, fiddle pattern with Kokosnik 84 mark for 1896-1908, unidentified Cyrillic maker's mark. 9"L, 5.29 oz troy. Condition: 1st item: possible wear to some of the Niello. 2nd item: a couple of small light dents. 3rd item: excellent condition. 300.00 - 400.00

**3088197 3 Pairs French Sugar Tongs**

1st item: French silver sugar tongs with acorn finial and claw grips, marked with Minerva head (standard mark illegible) and unidentified maker's mark, 6-1/2"L. Mid 19th century. 2nd item: French first standard (.950) silver sugar tongs with hinged bridge and Art Nouveau style decoration, 6"L. Late 19th century. 3rd item: French second standard (.800) silver sugar nips with figural seated nude decoration on handles. Mid 19th century. 6"L. 5.870 total troy ounces. Condition: All in very good condition. 300.00 - 350.00

**3088198 7 Nashville retailed Coin Silver Teaspoons**

7 coin silver teaspoons in the French Thread pattern, ca. 1845, marks for Wood & Hughes, New York, with William Calhoun Nashville retailer mark. The book TENNESSEE SILVERSMITHS by Dr. Benjamin H. Caldwell lists Calhoun working in Nashville 1839-1865. 4.26 oz troy total weight. Provenance: the estate of Margaret Wemyss Connor, Nashville, Tennessee. , 200.00 - 400.00

**3088199 28 pcs Silver Flatware inc. Mother of Pearl**

1st item: Set of 12 sterling silver salad forks, Leicester pattern by International, monogrammed J. 10.89 oz troy. 2nd item: Set of 8 mother of pearl handled knives with repousse



silver cuffs marked sterling. Plated blades are marked Landers Frary and Clark Aetna Works. 9"L. 3rd item: Silver plated salad serving spoon and fork with mother of pearl handles, unmarked, 8-3/4"L. 4th item: Set of 6 long handled hollow silver chocolate muddler spoons/straws, mid-century modern design, marked 925 Sterling RM Mexico. 7-1/2"L. 1.3 oz troy. Condition: Some wear to salad serving fork and spoon and to blades on knives. Other items very good condition. 200.00 - 300.00

**3088200 Sterling Bread Tray and Cocktail Forks**

Sterling silver bread tray, oval, with shaped, scrolled border, marked Spaulding & Co. Sterling 710, 12" x 8", together with 12 Gorham sterling cocktail or seafood forks in the Luxembourg pattern, old lion-anchor-G mark, 5-1/4"L. Combined weight: 13.65 oz troy. Condition: Bread tray with scattered small light dents, forks monogrammed. 250.00 - 350.00

**3088201 Sterling Silver Water Pitcher, Art Deco Monogram**

Sterling silver water pitcher by Dominick & Haff, New York, bulbous form with flared rim and C scroll handle, elaborate Art Deco monogram. 7-3/4"H, 20.74 oz troy. Circa 1920. Condition: A few small dents and some noticeable scratches, overall good condition. 400.00 - 500.00

**3088202 34 pieces assorted sterling plus 5 pc s/p flatware**

3 tablespoons, 6 teaspoons and 1 sugar spoon in late 19th century engraved floral patterns by Gorham and Towle; 6 flat handle butter spreaders and 1 master butter knife in the Washington pattern by Wallace; 6 teaspoons and 6 coffee spoons in the Pine Tree pattern by International (with raised pine trees on backs of handles); 1 Towle Lady Constance pattern teaspoon; 1 Whiting lemon fork, 1 Webster pap or infant feeder spoon, 1 Webster letter opener with stainless blade, and 1 SSMC sterling money clip. Also included are 1 silverplated cracker scoop, 2 silverplated cocktail forks and 2 silverplated demitasse spoons. 23.45 oz troy total weighable silver. Condition: Overall good condition with some monograms. 450.00 -





September 12-27, 2013 iGAVEL 9/12/2013-9/27/2013

650.00

**3088203 Wallace Sterling Flatware, Rosepoint, 16 pcs, case**

Wallace sterling silver flatware, Rosepoint Pattern, 16 pieces housed in an Adam style celluloid case with felt lining. All pieces marked Wallace Sterling. 3 Tablespoons, 4 butter spreaders with silver blades and flat handles, 2 round bowl soup spoons, 2 dinner forks, 2 salad forks, 1 teaspoon, 1 dinner knife, and 1 cold meat serving fork. 19.755 oz troy. American, mid 20th century. Condition: Very good condition with light scratching, no monograms. 350.00 - 400.00

**3088204 9 English Sterling Silver Liquor Labels**

Nine sterling silver liquor bottle labels or tags, on chains. Includes 1 Gin and 1 Vodka with a Rococo style shell and scroll motif, and 7 others with matching vintage grape leaf pattern with lion mask in center: 2 Bourbon, 2 Gin, 2 Vodka and 1 Whiskey. Each marked for A. Marston & Co., Birmingham, England, 1969-1970. 5.24 oz troy. Condition: Some overall tarnish; chain on Rococo style Gin label has come loose from label. 200.00 - 300.00

**3088205 Rare Gorham Sterling Moustache Cup plus basket**

2 pieces of antique Gorham sterling silver hollowware. 1st item: rare sterling silver shaving mug or moustache cup with beaded rim and removable pierced ledge. Marked Sterling with old Lion Anchor G mark, A 3449 on bottom. 3"H, 5.92 oz troy. 2nd item: Basket with decorative pierced silver frame, utensil holder, and swing handle, marked on bottom Sterling with old Lion Anchor G mark, A 6499. Removable milk glass insert marked on bottom in raised letters "MacLaren's Imperial Cheese". 5"H including handle, 2.75 oz troy excluding insert. Both American, late 19th or early 20th century. Combined weight: 8.67 oz troy weighable silver. Condition: Item 1: one 1/4" dent to side opposite handle, light scratching, light wear to base. Item 2: milk glass insert lacks lid and is probably not original. Lacking utensil. 200.00 - 250.00

**3088206 3 pcs Sterling Hollowware: Veg. bowl, 2 plates**

3 pieces sterling silver hollowware. 1st item: oval vegetable bowl with scalloped border, monogrammed ML or MS in center. Marked Sterling D400 on underside with old Reed & Barton mark. 2-1/2"H x 12"W x 8-1/2"D, 18.545 oz troy. 2nd item: Round plate with floral and medallion repousse border, marked on underside International Sterling 97. No monograms. 10" diameter, 9.19 oz troy. 3rd item: Cake plate with reticulated border, the center engraved with a cartouche design (no monogram), raised on a short circular foot. Marked Sterling 137A on underside with older International mark. 9-1/2" diameter, 9.325 oz troy. Combined weight: 37.06 oz troy. Condition: All pieces in very good condition with light scratching. 600.00 - 700.00

**3088207 Sterling Bread Plates and Bowl**

Grouping of sterling silver table items including eight (8) breadplates marked "Sterling 2529" (6" dia.) and a serving bowl marked "P.S. & Co., Sterling" (2 1/8" H x 9 1/8" dia.). 17.9 total troy ounces. Condition: One bread plate with dent to edge. Other pieces in overall very good condition with some surface scratching. 400.00 - 500.00

**3088208 Sterling and Coin Flatware plus boxed sets**

Assorted grouping of sterling and coin flatware plus two sets of boxed fruit services, 56 pcs total. Sterling includes a H. R. Morss & Co. carving set (stainless blades); one (1) sterling scalloped bowl serving spoon marked "C. R. Boas"; three (3) Durgin sterling tablespoons; a pair of English sterling sugar tongs marked for "Charles Hougham"; one (1) Gorham sterling cold meat fork; one (1) sterling cake server; one (1) English sterling fruit fork; one (1) sterling Art Nouveau butter spreader and two (2) Duhme & Co. sterling teaspoons. This lot also includes one (1) E. D. Kinsey (Cincinnati) coin silver serving spoon, one (1) silverplated nut pick, eleven (11) J. Russell & Company silverplated mother-of-pearl handled knives, a boxed set of six (6) silverplated fruit forks; a boxed set of six (6) silverplated fruit forks; six (6) fruit knives; an additional set of six (6) silverplated fruit forks; and six (6) knives with mother of pearl handles and chased designs.



September 12-27, 2013 iGAVEL 9/12/2013-9/27/2013

14.495 troy ounces, total weighable silver.  
Condition: Overall general wear. Denting to  
bowls of two spoons. 300.00 - 400.00

### 3088209 Two Posy Holders, sterling and mixed metals

Two Edwardian silver flower holders. 1st item: sterling silver posy holder or tussie-mussie, cone shaped with ball finial, marks for Chester, 1912-1913, 4-2/3"L, .885 oz troy. 2nd item: Mixed metals posy holder brooch or pin, unmarked, with applied phoenix and flower design on a textured background (possibly silverplate) with Gothic Revival trefoil borders and a brass or bronze exterior ring. 1-5/8"L. Condition: Maker's mark rubbed on posy holder. Exterior ring slightly bent on brooch. 300.00 - 350.00



### 3088210 Meriden Stag Head Tureen plus silver flatware

Victorian silverplated soup tureen and ladle, plus 5 pieces sterling flatware. Oval tureen with figural ram's head handles and four carytid feet in the form of stag heads and hooves. Lid features a double animal head and hoof finial. The lid and body are also engraved with fern and floral decorations. Marked on underside Meriden S. Company 1869 3. 10"H x 15" W x 10"D. Together with one William Rogers silverplated soup ladle, 11"L, and five sterling silver spoons including a Gorham Cambridge pattern sugar shell, a Baker Manchester sugar shell, a Paye and Baker cream ladle (monogrammed), a Lunt pierced nut spoon, and a souvenir spoon depicting the Midnight Ride of Paul Revere. Total weighable silver: 2.725 oz troy. Condition: Tureen has a few small dents and scratches overall very good condition. Flatware excellent with no monograms except for cream ladle. 300.00 - 350.00



### 3088211 Victorian Centerpiece w/ art glass basket, Simpson

Elaborate Victorian Silverplated Centerpiece or Epergne, attributed to Elkington. Stand with cast and pierced clusters of grapes and vines, winding down two entwined branches, to a tripod base with scrolled feet. The base is engraved with the Simpson family crest of a falcon and banner reading "Alis Nutrior" ("I am



fed by my wings"). Cased pink and white glass basket with enameled daffodils and gilt highlights. Unmarked. Overall height: 22" x 12" diameter. Probably English, circa 1865. Condition: Glass basket has some scattered fleabites to interior and to exterior of one ruffle, light wear to gilt enameling. Silver stand is in excellent condition. 1,000.00 - 1,500.00

### 3088212 Banquet Candelabra, Egg Cruet and Salver

Three 19th Century English Silverplated items. 1st item: Pair of English silver over copper candelabra. 3-arm branches remove to form single candlesticks, detachable bobèches. Bases marked with star, lion rampant and third, illegible mark. Probably mid to late 19th century. 18"H. 2nd item: Victorian silverplated Egg Cruet Stand with six footed egg cups on a rectangular frame with ball feet. Marks for J.H. Potter Sheffield, England on underside. 8-3/4"H. Late 19th century. 3rd item: Old Sheffield Plate footed salver or teapot stand with beaded border, 1"H x 7" diam. Condition: Candelabra: Some overall wear with some copper visible. Egg cruet: Very good condition, lacking spoons. Salver: Considerable wear to plating. 300.00 - 350.00



### 3088213 Long 8mm Cultured Pearl Necklace, 38"

Pearl necklace of knotted 8 x 8-1/2mm cultured pearls, very good luster and complexion, white-rose color, 38" long plus 1-1/8" L 14k yellow gold oval clasp. Condition: Very good luster and complexion. White-rose color. 300.00 - 500.00



### 3088214 Two 14k yellow gold chain necklaces

Two 14k yellow gold chain necklaces. 1st chain: One 15-1/4" L snake chain, marked 14k. 2nd chain: One 24" L box link chain, marked "14k, Italy". 16.6 grams total weight of both chains. Condition: Both in excellent condition. 450.00 - 550.00



September 12-27, 2013 iGAVEL 9/12/2013-9/27/2013

**LOT #**

Condition: Excellent condition. 350.00 - 450.00

**3088215 Man's 14k Movado Kingmatic SubSea Watch**

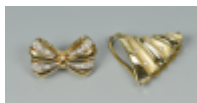
Man's 14k Movado Kingmatic "S" SubSea watch with date dial on a Speidel gold-filled and stainless strap. Dial: 1-1/8" diameter. In working condition at time of inspection. 51.7 total grams. Condition: Minor surface scratches on back of watch. In working condition at time of inspection. 300.00 - 400.00

**3088220 14k gold bangle bracelet, 18.7 grams**

14k (tested, not marked) yellow gold bangle bracelet with inset line decoration. 6-1/2" interior circumference x 7/16" H, with safety clasp. 18.7 grams. Condition: Excellent condition. 500.00 - 600.00

**3088216 Two 14k and Diamond Necklace Enhancers**

Two 14k and diamond necklace enhancers. 1st enhancer: 14k yellow gold and diamond pearl and/or bead clasp which is used to double a strand of beads. Clasp contains 16 brilliant round diamonds weighing approximately .03 ct each (VS2, H-I) 11/16" H x 1-1/8" W x 1/2" D. 6.7 grams. 2nd enhancer: 14k yellow gold (tested, not mark) necklace enhancer/attachment of swirl design with alternating bright and satin finish. The satin sections contain 6 round brilliant diamonds weighing approximately .03 ct each (VS2, H-I) 1" H x 1-1/4" W x 1/4" D. 5.6 grams. Condition: Excellent condition with minor surface scratches. 425.00 - 525.00

**3088221 Two Lady's Raymond Weil & Movado Watches**

Two Lady's Raymond Weil and Movado gold-plated dress watches. 1st watch: Lady's 18k gold-plated dress watch with allover crystal stone dial and panther link bracelet strap. Marked on back of watch: 3722-2, 18K electroplated, 10M, water resistant, patented model. Dial: 3/4" diameter. 2nd watch: Lady's 18k electroplated Movado museum dial face watch with panther link bracelet strap. Marked on back of watch: Movado since 1881, water resistant, steel back, quartz, 2889782, 87.ES.817 S. Dial: 7/8" diameter. Condition: Neither watch was running at time of inspection. 350.00 - 450.00

**3088217 Pair 18k Hammered Earrings**

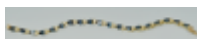
One pair 18k yellow gold earrings with hammered finish and post and Omega backs, 1-1/8" H, 13.5 grams. Condition: Excellent condition. 475.00 - 575.00

**3088218 Pair 18k Earrings**

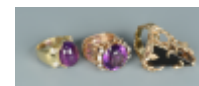
Pair 18k yellow gold earrings in a diagonal square shape with hammered crisscross pattern over a smooth finish with post and Omega backs, 1-1/4" H x 1-3/8" W, 15.1 grams. Condition: Excellent condition. 500.00 - 600.00

**3088219 14k Sapphire & Diamond Line Bracelet**

14k yellow gold natural sapphire and diamond hinged link bracelet containing 19 pear-shaped sapphires with a total weight of approximately 11 cts and 38 diamonds with a total weight of approximately .38 ct. 7-1/4" L, 11.9 grams.

**3088223 Three Semi-precious Rings**

Two Amethyst and one citrine quartz rings. 1st ring: 18k yellow gold amethyst and diamond ring containing one amethyst cabochon measuring 13.8 mm x 11.7 mm and weighing approximately 5 ct with four radiant cut

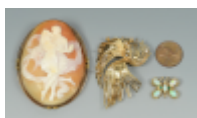


September 12-27, 2013 iGAVEL 9/12/2013-9/27/2013

diamonds with a total weight of approximately .80 ct. (VS2, J-K). Ring size 2-1/2. 9.8 grams. 2nd ring: 14k rose gold amethyst and diamond ring containing one faceted round amethyst measuring 14 mm and weighing approximately 5 ct and eight transitional brilliant diamonds together weighing approximately .15 ct. (SI1-SI2, H-I). Ring size: 5. 10.4 grams. 3rd ring: One 14k yellow gold citrine quartz ring in a gold stylized vine mounting, citrine measures approximately 22.5 mm x 15 mm and weighs approximately 25 ct. Ring size: 3-1/2. 13.7 grams. Condition: All in very good condition with minor surface scratches on mounting. The second ring has one small diamond with a chip on bottom. 350.00 - 450.00

**3088224 14k Spray Pin, Butterfly pin, Cameo Brooch**

Group of three pins. 1st item: 14k yellow gold spray pin/pendant with diamonds, total diamond weight approximately .33 ct. (I-J, VS2-SI1), 10.2 grams, 2-1/4" H x 1-1/2" W. 2nd item: Small 14k yellow gold opal, diamond and emerald butterfly pin, 2.6 grams, 5/8" H x 3/4" W. 3rd item: Oval shell cameo pin/pendant of two lovers with rolled-gold mounting, 2-5/8" H x 2" W. Three items total. Condition: Overall very good condition. Minor bends in spray pin. 375.00 - 475.00

**3088225 Pair Etruscan style 18k Mabe Pearl Dia Earrings**

Pair 18k yellow gold mabe pearl and diamond earrings in Etruscan round style containing eight round brilliant cut diamonds with a total weight of approximately .40 ct. (VS2/I-J) with posts and Omega clips. 1-1/8" diameter. 16.8 total grams. Condition: Excellent condition. 450.00 - 550.00

**3088226 Pearl Necklace w/ 14k Dia & Sapphire Clasp**

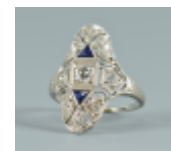
One knotted 7mm x 7-1/2mm double strand pearl necklace with a 14k white gold diamond and sapphire starburst clasp. Very good luster, complexion, white color. 17-1/2" L. Condition: Excellent condition. Very good luster, complexion and white color. 350.00 - 450.00

**3088227 5 Pocket Watches incl 18k Wegelin Fils**

Group of five pocketwatches. 1st item: Wegelin Fils, Geneve (Geneva) 18k yellow gold pocket watch, size 12, with black enamel scroll decoration on frame and bale. 2nd dial, 6 jewels, marked inside case: 2063, 18k. 1-3/4" diameter. 48.5 grams including mechanism. 2nd item: Hamilton Watch Co. 14k gold-filled 17 jewels pocket watch, size 14, with yellow dial, Arabic numerals and second dial. Case: 9075379, Works: 718229, 2" diameter. 3rd item: Illinois Watch Co. 10K gold-filled 17 jewels pocket watch, size 9, with silver tone dial, Arabic numerals and second hand. Star Watch Co. Case: 7450243, Illinois Watch co. Works: 4710175, 1-13/16" diameter. 4th item: Waltham Co. hunting case watch, size 00, with embossed bird and leaf design on case, 10k (tested, not marked) Roman numerals with second dial. (Glass face missing) Case: 232632, Works: 4011625. 1-1/2" diameter. 5th item: Waltham Co. gold-filled hunting case, size 4, white enamel dial with Roman numerals and second dial. Etched bird with church and vine decoration. Case: 184299, Works: 17847000, 1-5/8" diameter. Condition: 1st item: losses to dial and watch not in working condition. 2nd item: Case and dial in good condition. Mechanism not running. 3rd item: Case in good condition. Dial with some losses. Mechanism not running. 4th item: Glass face missing. Case in good condition. Mechanism not running. 5th item: One side does not latch. Case with minor wear. Mechanism working at time of inspection. 500.00 - 600.00

**3088228 Art Deco Diamond, Sapphire Ring**

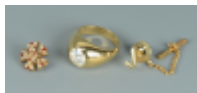
Ladies' Art Deco 18 karat white gold and platinum duchess ring with 8 small round diamonds and two triangle shaped blue sapphires supporting a slightly larger transitional old European cut / round brilliant cut diamond in the center. Combined carat weight of diamonds is 1/3 carat. Ring size 5, 3.0 grams. Copy of fair market value appraisal report available on request. Condition: Very good condition. 300.00 - 350.00



September 12-27, 2013 iGAVEL 9/12/2013-9/27/2013

**LOT #****3088229 Gents gold ring, tie clip and frat pin**

1st item: Gentlemen's high polished 14 karat yellow gold ring holding a 9 mm diameter round brilliant cut synthetic rutile (diamond simulant), 10.1 grams, excellent condition, ring size: 10.  
 2nd item: 14 karat yellow gold tie clip in the form of a check, 1/3" L (not including chain). Post and chain not 14k. 3rd item: 14 karat yellow gold garnet and seed pearl Sigma Nu fraternity pin, previous owner name engraved on back, 1/2" diam. Gold tested as 14k, not marked. Condition: All items very good condition. 300.00 - 400.00



oval faceted amethyst with gold floral highlights, 5.7 grams, ring size 7.5. 20.5 total grams. Condition: Overall excellent condition. 400.00 - 500.00

**3088234 Signed Scaasi Multicolor Necklace**

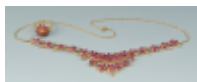
Scaasi designer costume jewelry necklace. Faux jade, ruby and diamond two tiered choker / bib style, necklace, stamped Scaasi. Circa 1960s. 13" interior, 19-1/4" exterior. Condition: Some wear to underside of necklace. 400.00 - 600.00

**3088230 18k Earrings w/ Green Onyx Intaglios**

Pair round 18k yellow gold earrings with green onyx intaglio centers, with post and Omega clips, 1-1/4" diameter, 15.7 grams. Condition: Excellent condition. 350.00 - 450.00

**3088231 14k Ruby Stone Necklace and Ballerina Ring**

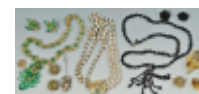
14K yellow gold and ruby multi-stone necklace in the pendant style together with a companion style ballerina ring with 14K mount and ruby stones. Length of necklace 16 3/4" and size of ring 5.5. Condition: Overall excellent condition. 350.00 - 450.00

**3088232 Two 14K Colored Stone Rings**

Two 14k yellow gold rings. 1st item: 14k yellow gold ring (marked 18k but tests as 14k) contemporary ring with blue stone framed by diamond melee, 11.5 grams, ring size 8. 2nd item: 14k yellow gold nugget style ring with cabochon amethyst, 17.7 grams, ring size 8. Total weight 29.2 total grams. Condition: Some abrasions to faceted amethysts. Minor surface scratches to mountings. 500.00 - 700.00

**3088235 9 pcs costume jewelry inc. Miriam Haskell**

Lot of designer costume jewelry. 1st set: Miriam Haskell goldtone necklace with graduated filigree disks accented with tiny rhinestones and green faceted beads and central pendant clustered with green glass oval "emeralds", 16"L. Matching earrings with clip backs. All pieces stamped Miriam Haskell. 2nd set: Miriam Haskell jet black bead necklace, 28"L, with pendant style cluster of dangling long jet beads at center, signed with tag. Matching earrings with screw backs, stamped Japan. 3rd set: Miriam Haskell brooch and similar but not matching screwback earrings, both goldtone metal with amber colored stones, brooch measures 2-3/4". 4th set: Triple strand necklace with faux freshwater pearls, clasp with cluster of small seed pearls and metal "leaves", signed A Robert Original, together with a stickpin having a large freshwater style pearl, metal leaves and small rhinestones (unsigned), and cluster earrings with metal leaves and small rhinestones (unsigned). Condition: All items with some minor wear, 1st two items in very good condition. 3rd set has two small chips to the finish on leaves and the screw back of one earring is missing. 4th set: some pearls in necklace lack gilt caps, one pearl petal on clasp has disintegrated, large faux pearl in stick pin shows surface wear. 400.00 - 600.00

**3088233 Pair Amythest 14K Rings**

Pair of his and hers 14K amethyst rings. 1st item: 14k yellow gold ring with faceted amethyst with gold floral highlights, 14.8 grams, ring size 8. 2nd item: 14k yellow gold ring with

**3088236 Judith Leiber Belts and Bags**

Group of Judith Leiber designer items. 1st group: Three snakeskin clutch handbags in red, black and cream, all with straps and various closures. 5-1/4" H x 8-3/4" W x 2-1/4" D to 8"





September 12-27, 2013 iGAVEL 9/12/2013-9/27/2013

H x 11" W x 2-1/2" D. 2nd group: Four Judith Leiber designer stretchable gold-tone belts, some with colored stones, 26-1/2" L to 27-1/4" L unstretched. Each marked on inside of buckle. 7 items total. Condition: 1st group: Minor surface grime on bone colored bag. Some slight lifting of skin on black bag. Minor surface scratches on red bag. Otherwise all in very good condition. 2nd group: One small impressed dent on larger multi-stone belt. Minor surface wear on onyx buckle belt. 400.00 - 600.00

**3088237 3 Vintage Crocodile/Alligator Handbags plus other**

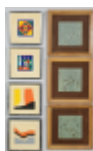
Group of three vintage crocodile and alligator handbags. Black alligator by Escort: 9" H x 9-1/2" W x 3" D. Black crocodile handbag with 2 handles: 8" H x 10-3/8" W x 2-1/2" D. Brown handbag: 9-3/8" H x 13-1/2" W x 3-3/4" D. Group also includes one smaller brown alligator type handbag by Saks Fifth Avenue with 2 handles, 6-1/2" H x 9" W x 3-1/2" D. (4 bags total) Condition: Black Escort bag with loose seams in handle and some wear to gold metal and interior. 2nd black bag: Marked "Made in USA"; minor wear to handles and interior. Brown bag: Wear to gold metal and minor wear to interior. 250.00 - 350.00

**3088238 Group of 16 Designer Handbags**

Group of designer handbags including several evening bags by Bally, "JH", Tory Burch, Charles Jourdan, Timmy Woods, Rodo, Jay Herbert, Saks Fifth Avenue, Morris Moskowitz, Sharif and others. Size range: 4" H x 6-1/4" W x 2-1/2" D to 7-3/4" H x 12-5/8" W x 4-1/2" D. Sixteen handbags total. Condition: All in very good condition with some minor wear to interior. 300.00 - 400.00

**3088239 Grouping of 7 20th Century Art Pieces**

Grouping of two abstract serigraphs by Anton Fortescu-Smyth, two contemporary woodblock prints signed Cose and three Harris Strong abstract tiles. 1st item: Matted and framed abstract serigraph by Anton Fortescu-Smyth titled and numbered in pencil "167/175 Striped"; printed in black, orange and yellow. Frame: 8-3/4" x 8-3/4" Sight: 5-3/4" x 5-3/4". 2nd item:



Matted and framed abstract serigraph by Anton Fortescu-Smyth titled and numbered in pencil "160/175 Landscape"; printed in orange, black and light blue. Frame: 8-3/4" x 8-3/4" Sight: 5-3/4" x 5-1/2". Both pieces are signed in pencil on the bottom, right corner. 20th century. 3rd item: Woodblock print signed in pencil "Cose" numbered and titled in pencil "199/300-2ed Enclosure" with geometrical shapes in red, dark blue, light blue, black, white and green. Frame: 8-1/4" x 8-1/4" Sight: 4-5/8" x 4-5/8". 4th item: Woodblock print signed in pencil "Cose" and numbered and titled in pencil "126/300-2ed Tangential" with geometrical shapes in red, orange, blue, yellow and green. Frame: 8-1/4" x 8-1/4" Sight: 4-5/8" x 4-5/8". 5th item: Three Harris Strong abstract art pottery tiles, housed in their original walnut frames. Tiles measure - 6" H x 6" W. Framed - 11 3/4" H x 11 3/4" W. American, 1960's. 20th century. Condition: Toning to paper in both serigraphs. "Landscape" has areas of grime in matting and two spots of browning in margin. Light toning to both woodblock prints. "Enclosure" has water damage to matting. Framed tiles good condition with expected light wear. Some damage and water stains to mattes around tiles. 200.00 - 300.00

**3088240 Two Alvar Embossed Lithographs, Artist Proof**

Two Alvar Sunol Munoz-Ramos (Spain/France, 1935 - ) embossed Artist Proof lithographs from the Suite Commence La Musica. Both numbered lower left, PA XIX/XXV, and signed lower right. One lithograph measures 26-3/8" x 18-7/8" Sight and 34-3/4" x 27-1/4" Framed. The other measures 28" H x 19-3/4" W Sight and 35" H x 26-1/8" F. Both 20th century. Condition: Both overall very good condition. 400.00 - 450.00

**3088241 Karl Fred Dahmen color etching**

Karl Fred Dahmen (German, 1917-1981), "Mobile Konstruktion". Color etching, pencil signed in margin, titled, dated 1978 and numbered 73/75. 27" x 20-3/4" Condition: 2" crease to lower margin. 100.00 - 150.00



September 12-27, 2013 iGAVEL 9/12/2013-9/27/2013

**LOT #****3088242 1950 Modern Czech Game Table**

A modern Czechoslovakian game table comprised of mahogany, walnut, and beechwood veneer with chess-board inlay. The table top slides on runner to open and close the storage compartment below. Label on the bottom, partially legible reads: Vyrobek stolek, Tec...data: 615 481 5332. Purchased from Prague Kolektiv Gallery in Brooklyn, New York in 2008. Example of decorative arts made in Czechoslovakia during the Socialist Realism movement. 24 1/2" H x 48 1/2" W x 19 1/2" D. Circa 1950's. Condition: Repair to one leg; screw replaced at sliding mechanism; light wear to all top edges. Lacquer added to top. 200.00 - 400.00

**3088243 "Squid" Mirror by Richard Sextone**

Hand-forged mild steel and pipe mirror in the form of a squid by Robert Sextone. Sextone is an artist, wood worker and blacksmith who resides in Putney, Vermont. 37 1/4" H x 16 1/2" W. 20th century. Condition: Overall very good condition Condition: Overall very good condition 400.00 - 500.00

**3088244 Pair Figural Iron Art Deco Lamps**

Pair of Art Deco period dark green painted cast iron uplights with figural heads and paw feet, possibly originally mounted as architectural sconces. 37"H. Circa 1930. Condition: Light wear to feet, both with some surface wear to faces. Newly rewired and functional. 400.00 - 600.00

**3088245 Pair of Silvered Gilt Corinthian Capitals**

Pair of architectural Corinthian column capitals, pine with silvered gilt finish. 8-7/8"H x approximately 12" square. Continental, late 18th to early 19th century. Condition: One with 6" area of loss to base; both with scattered losses, chipping, and considerable wear to gilt. 300.00 - 400.00

**3088246 Marble Relief Carved Pedestal Fragment**

Neoclassical marble pedestal fragment, circular form, carved in high relief with scenes of parading children festooned with garlands, one riding in a cart. 7"H x 10"Diam. Probably Italian, early 19th century. Condition: Several scattered losses and cracks, wear to figural relief decoration. 300.00 - 400.00

**3088247 Baroque Style Carved Figural Shelf Support**

Baroque style carved walnut shelf support, the side support in the form of two full length male carytid figures depicted wearing robes, possibly saints, joined by a stretcher with incised lunette designs. Probably an old furniture fragment. 17" H x 31"W. Continental, 17th century. Condition: Lacking carved elements above figures' heads, pest damage, wear. 400.00 - 600.00

**3088248 Pair Carved Painted Carousel Mirrors**

Pair of decorative painted carved and giltwood panels with mirrored insets, likely from a carousel. Each 24-1/2"H x 14-1/4"W. Late 19th century. Condition: Scattered paint loss and wear, mirrors are somewhat cloudy. 300.00 - 350.00

**3088249 Carpenter Marine Steamboat Lantern & Other**

1st item: Marine Lantern with colorless fresnel lens, American, early twentieth century: galvanized steel case, brass kerosene burner, and glass, 10-1/8" high x 5-1/2" wide x 5" deep. Bears an oval brass plaque reading, George B. Carpenter & Co. Chicago. Note: By oral tradition, this lantern was used on a small Mississippi River steamboat. 2nd item: Marine Lantern with colorless fresnel lens, British, circa 1945; galvanized steel and glass, 24-3/4" high (overall) x 11-7/8" high (lamp only) x 7-5/8" wide x 8" deep. Has a galvanized steel kerosene burner stamped BEC 1945. Bears a stamped label of the Birmingham Engineering Company. Condition: 1st item: Some exterior corrosion and dents, minute nick to edge of glass. 2nd item: Slight to moderate exterior corrosion. 250.00 - 350.00



September 12-27, 2013 iGAVEL 9/12/2013-9/27/2013

**3088250 Painting of a Jester, signed Davidson**

Post-modern oil on canvas of a dunce or carnival jester wearing white hat and harlequin suit, standing before a brick wall with the sign "Games" behind him. Signed "Davidson" lower right (possibly Sam Davidson, American, 20th century). Natural colored wood frame with ebonized edges. 19-1/2"H x 39-1/2"W sight, 29-5/8" x 49-5/8" framed. Condition: Blacklight reveals touchups on right eyebrow and eye, otherwise excellent condition. 300.00 - 500.00

**3088251 Paul Sollmann, Oil on Canvas, Spanish Courtyard**

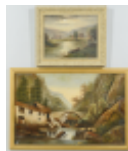
Paul Sollmann (German, 1886 - 1950) oil on canvas painting depicting the courtyard of a Spanish style home with seated figure. Signed and dated "Paul Sollmann, 1927" lower left. Unframed. 39 1/2" H x 31 1/2" W. Condition: Unframed. Overall very good condition with some slight rubbing to edges of canvas. 200.00 - 300.00

**3088252 Paul Gehrman, Still Life, Oil on Canvas**

Paul Gehrman (German, 1861-ca. 1923?) still life painting, oil on canvas, depicting a table with fruit, flowers, a silver water pitcher and lute below an open window with a bird and upturned glass. Signed "P. Gehrman" lower left. Unframed. 28" H x 40" W. Condition: Unframed. Some areas of deep crackle to paint with some slight rubbing at the edges of canvas. 300.00 - 500.00

**3088253 Two 19th c. European Landscape Oils on Board**

1st item: European oil on board depicting a farm by river with a rowboat in the foreground. Housed in a painted wooden frame. Sight - 9 1/2" H x 11 3/8" W. Framed - 13 1/4" H x 15 1/4" W. 19th century. 2nd item - European oil on canvas depicting a mill with bridge by a river and a mountainous backdrop. Housed in a gilt wood frame. Sight - 15 3/4" H x 23 3/4" W. Framed - 18 1/8" H x 26 1/4" W. 19th century. Condition: 1st item: Overall very good condition. 2nd item: Some areas of loss, upper center perimeter and right side perimeter. 200.00 - 250.00

**3088254 Munson Illustration Art, Cradle of Independence**

Floyd Munson (American, 20th century), "The Cradle of Independence," 1940s era illustration art, portrait of a child in a crib, used to advertise savings bonds. Signed lower right and in the image of the book. Framed with a simulated faux-painted white mat. 19" x 13-1/2" sight, 24" x 18" framed. Condition: Small patch repair at center left side. 200.00 - 250.00

**3088255 Attr. Jon Carsman, Floral Watercolor**

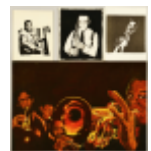
Watercolor painting of iris or orchids, signed lower right Carsman (attributed to Jon Carsman, American, 1944-1987). Beige mat and stained molded frame. 9-1/2" x 14" sight, 14-1/2" x 18-1/2" framed. Provenance: the estate of Margaret Wemyss Connor, Nashville, Tennessee. 200.00 - 300.00

**3088256 James Kearns drawing, "Woman", 1960**

James Kearns (American, b. 1924), ink wash and conte crayon drawing. Information verso includes a G. Gallery label with the title and date. Oak frame with linen mat. Sight: 10-1/8" H x 13-1/4" W. Frame: 17-1/2" H x 20-1/4" W. Circa 1961. Condition: Good condition. Abrasions to frame and light smudging to lefthand side of drawing. 100.00 - 200.00

**3088257 4 Jazz Related Portraits by James Caulfield**

Four portraits of legendary jazz artists by James Albert Caulfield III (Michigan/Tennessee, 1946 -2010) including One (1) oil on board of Louis Armstrong with three band members (18 x 26-3/4); One (1) mixed media gouache and ink on board portrait of Art Tatum at the piano (10 x 8); One (1) mixed media gouache and ink portrait of Benny Goodman with a clarinet (10-1/2 x 9-1/4); One (1) woodblock limited edition print, #6/50, possibly a portrait of Ravi Shankar (11 x 8-1/2). All late 20th century. Biography: James Albert Caulfield III was born in Detroit, Michigan and lived most of his early life in East Lansing until he moved to Knoxville, Tennessee in 1985. As a child he loved to draw and sketch and received formal art training at Michigan State University and Lansing Community College. He trained and worked as



September 12-27, 2013 iGAVEL 9/12/2013-9/27/2013

an illustrator and commercial artist and painted with watercolor and gouache in a "realistic controlled manner". In both Michigan and Knoxville he featured the local and regional material, people and places in his work. Condition: Overall very good condition with some surface abrasions and grime on oil painting. 200.00 - 300.00

### 3088258 Sporting and Art Related Works by James Caulfield

Assorted group of eight (8) works of art, gouache, watercolor and ink drawings by James Albert Caulfield III (Michigan/Tennessee, 1946 -2010) including Chicago Cubs' Leo Durocher and a Baltimore Orioles #4 player, one cowboy character, and four caricature illustrations of artists' tools such as pencils, crayons and an inkwell. All late 20th century. Biography: James Albert Caulfield III was born in Detroit, Michigan and lived most of his early life in East Lansing until he moved to Knoxville, Tennessee in 1985. As a child he loved to draw and sketch and received formal art training at Michigan State University and Lansing Community College. He trained and worked as an illustrator and commercial artist and painted with watercolor and gouache in a "realistic controlled manner". In both Michigan and Knoxville he featured the local and regional material, people and places in his work. 10 x 8 to 24 x 20 overall. Condition: All very good condition. Some with minor surface grime. 200.00 - 300.00



### 3088259 7 Roadside Diner Works by James Caulfield

Assorted group of seven (7) works of art, ink and gouache, of roadside diners or stands, including a gouache of a closeup Futurama scene, all by James Albert Caulfield III (Michigan/Tennessee, 1946 -2010). All late 20th century. Biography: James Albert Caulfield III was born in Detroit, Michigan and lived most of his early life in East Lansing until he moved to Knoxville, Tennessee in 1985. As a child he loved to draw and sketch and received formal art training at Michigan State University and Lansing Community College. He trained and worked as an illustrator and commercial artist and painted with watercolor and gouache in a "realistic controlled manner". In both Michigan and Knoxville he featured the local and regional material, people and places in his work. 11 x



8-1/2 to 24 x 20 overall. Condition: All very good condition. 250.00 - 300.00

### 3088260 Green Art Glass Oil Lamp, attr. Loetz

Oil lamp with deep green frosted art glass body, tapering to a round foot and a domed shade, possibly Loetz. Clear glass chimney. The brass burner is marked Spar Brenner. 16-1/2"H overall. Late 19th century. Condition: Clear chimney is chipped and cracked at lower edge, otherwise very good condition. 250.00 - 350.00



### 3088261 4 Loetz Type Art Glass Items

Four (4) Loetz type Art glass items including a green iridescent handled bowl (4 1/2" H x 7 3/8" W); clear opalescent vase with brass flower frog cover (5 5/8" H x 5 1/4" W, chips to rim); an opalescent vase with brass flower frog cover (6 1/2" H x 9 1/4" W); and a clear art glass bowl with blue swirl rim (5 3/8" H x 3" dia). All pieces unmarked. Early 20th century. Condition: All pieces very good condition unless otherwise noted. 100.00 - 200.00



### 3088262 2 Czechoslovakia Cut Crystal Perfume Bottles

1st item: Blue cut crystal perfume bottle, square footed base with frosted openwork stopper, original paper sticker GENUINE HAND WOLFLE CUT CRYSTAL, frosted MADE IN CZECHOSLAVAKIA label etched on base. 5-3/4"H. 2nd item: Blue cut crystal perfume bottle with oblong base and clear cut stopper with frosted dauber. MADE IN CZECHOSLAVAKIA label etched on base. 6"H. Circa 1940. Provenance: estate of Sara Lee Buhler, Yorktown, Indiana. Condition: 1st item: Minute chip to one top corner of base. Stopper excellent. 2nd item: 2 minute chips to bottle edges and a couple of very minute chips to interior rim, stopper excellent. 100.00 - 200.00



### 3088263 Early Rookwood Vase, signed O. G. Reed

Early standard glaze Rookwood vase, 1895, painted by Olga Geneva Reed, having pansy decoration. Base with RP stamped logo and



September 12-27, 2013 iGAVEL 9/12/2013-9/27/2013

flames, form # 764C and artist initials OGR. 4  
3/4" H. Condition: Overall excellent condition.  
250.00 - 350.00

**3088264 2 Jonathan Fisher Massachusetts Framed Silkscreens**

Pair of silkscreen prints after the original gouaches by the artist Rev. Jonathan Fisher (1768-1847), titled "Hollis, Harvard and Massachusetts Hall" and "Massachusetts Hall in the University of Cambridge, New England." Produced by Pippin Press in the 1940s in collaboration with the Boston Athanaeum and Harvard Library in an edition of 500. Ivory mat and simple ebonized frame. Label en verso: "Framed at Goodspeed's Book Shop Inc. 18 Beacon Street, Boston." 10-1/2" x 13-1/2" sight, 17-3/4" x 22" framed. Provenance: the estate of General Hanford MacNider, Mason City, Iowa. Condition: Excellent condition. Not examined out of frame. 100.00 - 200.00



**3088265 2 Cincinnati Etchings by E. Hurley & Williamson**

1st item: Edward Timothy Hurley (American/Ohio, 1869 - 1950) etching depicting Tyler Davidson Fountain in Cincinnati, Ohio. Pencil signed lower right along with the initials "JHO". Additionally signed in the plate lower right. Sight - 12 5/8" H x 9 3/8" W. Framed - 19" H x 15 3/8" W. 2nd item: Etching by Caroline Williamson (American, 20th century) titled "An Old Alley". Pencil signed lower left and numbered 6/75. Additionally signed in the plate lower right. Sight - 11" H x 6" W. Framed - 17 3/4" H x 12 1/4" W. 20th century. Condition: Both etchings very good condition. Some abrasions to the wooden frames. 200.00 - 300.00



**3088266 2 Marc Chagall Galerie Maeght lithograph posters**

2 Marc Chagall gallery posters, both lithographs published by Mourlot for the Galerie Maeght circa 1960s, unsigned. 27-1/2 x 20-3/4" and 30-1/4" x 19-3/4". Condition: The Green Bird has light thumb dings and minor edge wear. The Artist as Phoenix has some light grime/staining mostly at edges, some creasing at left side, and small edge tears along top edge. 100.00 - 200.00



**3088267 Marc Chagall framed Circus print**

Marc Chagall offset lithograph, printed signature at right margin, numbered 125/500. Designer matted and framed in a silvered molded frame. 29-1/2" x 20-1/2" sight, 45" x 37" framed. Late 20th century. Condition: Excellent condition. 250.00 - 350.00



**3088268 Chinese Gilt Bronze Tree & 2 Agate Carved Figures**

1st item: Chinese gilt bronze tree mounted on a natural stone base with carnelian stones. 12 3/4" H x 6 1/2" W x 5 1/4" D. 20th century. 2nd item: Two carved Chinese agate figures including a dog (1 3/4" H) and horse mounted on a hardwood stand (2 1/2" H x 3 1/2" L). Both 20th century. Condition: Tree missing one stone. Carved figures excellent condition. 250.00 - 350.00



**3088269 3 Carved Chinese Jade Plaques**

Three carved Chinese jade plaque pendants including a carved butterfly (3" x 2"), round disc with carved foo dogs (2" dia.), and round plaque with openwork symbol carving (2" dia.). Late 19th/Early 20th century. Condition: All three very good condition. 300.00 - 400.00



**3088270 2 Chinese Carved Jade Items - Figural & Inkstone**

1st item - Chinese celadon jade carving of horse figure with fly resting upon the horse's back. 2" H x 1 1/2" W. Late 19th/Early 20th century. 2nd item - Chinese celadon jade inkstone carved with bat and pierced foliage to the sides. 4 3/4" H x 3" W. 20th century. Condition: 1st item - break to one eye of fly, otherwise excellent. 2nd item - excellent condition. 200.00 - 400.00



**3088271 4 Chinese Decorative Items**

Grouping of four Chinese decorative items. 1st item: Blue and white porcelain pillow stand with decoration depicting foo dogs chasing the jewel. 5 1/2" H x 4 3/4" W x 2 3/8" D. 2nd item: Song style eggshell porcelain low bowl with incised floral decoration and shaped rim. 7 1/4" dia. x 2 1/8" H. 3rd item: Chinese famille rose





September 12-27, 2013 iGAVEL 9/12/2013-9/27/2013

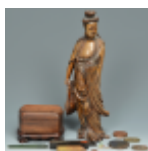
eggshell porcelain bowl with shaped body and rim and dragon decoration. Red seal form mark to base. 1 3/4" H x 4" dia. 4th item: Carved celadon green jade plaque depicting two seated figures. 1 1/2" H x 1 7/8" W. All items 20th century. Condition: 1st item: Overall very good with general wear and some stains. 2nd item: Overall very good with some stains. 3rd item: Approx. 1/2" hairline crack to one side. 4th item: Hairline crack to center bottom where figures join. 300.00 - 400.00

**3088272 Japanese Studio Pottery Leaf-Form Bowl**

Japanese studio pottery leaf-form bowl with interior blue/green glaze. 3" H x 15 1/2" L x 9 1/2" W. Early 20th century. Condition: Overall very good condition. Cracklure to interior glaze. 250.00 - 350.00

**3088273 9 Chinese Decorative Items**

Assembled grouping of nine Asian decorative items. Item 1: Carved Asian hardwood figure depicting Quan Yin holding a ruyi. 15 1/4" H. 20th century. Item 2: Chinese hardstone seal housed in the original case with remnants of red ink. 4 1/4" L. 20th century. Item 3: Carved Chinese rectangular spinach green jade pendant. 4 7/8" L. Item 4: Miniature Chinese earthenware pottery foo dog figural seal. 5/8" H. Items 5-6: Two oval form copper Chinese coins. 1 7/8" L x 1 1/4" W. Items 7-8: Two Japanese copper medallions, one dated 1926. Item 9: Carved Chinese hardwood box, rectangular form with a conforming stand. 20th century. Overall dimensions - 3 1/2" H x 5 1/2" L x 4 1/2" D. Condition: Item 1: Split in middle, missing hand, and missing foot on base. 2nd item: Some wear and slight chips to seal. 3rd item: Very good condition. 4th item: Some slight chips to figure. 5th & 6th items: Some oxidation. 7th & 8th items: Smaller medallion very good condition. Other medallion with oxidation. 9th item: Overall very good condition. 250.00 - 350.00

**3088274 Pr Cloisonne Emperor and Empress Figures**

The pair with cloisonne body with ivory-type faces and hands and with elaborately gilded and beaded headdresses and holding gilt and enameled filigree vases; the figures seated atop wooden thrones decorated with gilt serpents and dragons. 15" H x 11-1/2" W x 12" D. 20th century. Condition: Overall very good condition. Few cracks to beads and few loose parts. 300.00 - 500.00

**3088275 Thai Bronze Buddha w/ Pr. Jue Vessels**

1st item: Thai bronze sitting Buddha, Subduing Mara pose. Certificate of authenticity from Asian Gallery included with this item. 8 1/2" H. 20th century. 2nd item: Pair of miniature Jue wine vessels, tri-foot form with animal form handle, 4 3/4" H, 20th century. Condition: All items very good condition with expected wear. 250.00 - 350.00

**3088276 3 Chinese Carvings, wood and stone**

Lot of Three Chinese carvings. 1st item: Carved wood sculpture of a man holding a rui. 13"H. 19th century. 2nd item: Carved hardwood sculpture of a man holding a peach or small ball. 12"H. Late 19th century/early 20th century. 3rd item: Carved hardstone foo dog or lion atop a base carved with floral design. 6"H. 19th or early 20th century. Condition: Item 1: Scattered age cracks. Item 2: Repair to robe in front, loss to hand on other side. Item 3: Traces of old red paint on mount, general wear, some chipping to base. 200.00 - 300.00

**3088277 Chinese Dragon Vase**

Chinese Ming style vase, red overglaze with incised, low relief dragon decoration and applied zoomorphic handles. 7"H. Unmarked. 20th century. Condition: Three scratches (1/2"L) near lower edge. 400.00 - 600.00



September 12-27, 2013 iGAVEL 9/12/2013-9/27/2013

**LOT #****3088278 Chinese Porcelain Blue & White Bottle Vase**

Chinese porcelain blue and white vase, bottle form, with five toe dragon chasing pearls amongst clouds decoration. Blue Hsien Feng mark to base. 9 1/4" H. 20th century/modern. Condition: Excellent condition. 200.00 - 250.00

**3088279 Chinese Famille Rose Bottle Vase**

Chinese porcelain Famille Rose bottle vase with robin's egg blue ground and figural and floral decoration. Blue Chien Lung seal mark to base. 12" H. 20th century/modern. Condition: Some slight wear/loss to glaze on side, possibly in the making. Overall very good condition. 250.00 - 350.00

**3088280 Chinese Famille Rose Bowl w/ millefleur ground**

Chinese Famille Rose porcelain bowl, the exterior with painted vignette decoration of birds, dragons and flowers on a millefleur ground. Base having a blue Ch'ien Lung seal mark. 3 1/4" H x 7 5/8" dia. 20th century/modern. Condition: Overall excellent condition. 200.00 - 300.00

**3088281 Chinese Celadon Porcelain Vase w/ Dragon Decoratio**

Chinese porcelain vase after the Song dynasty having a celadon glaze with raised terracotta bisque dragon decoration to the front side. 6 1/4" H. 20th century. Condition: Overall very good condition. 200.00 - 300.00

**3088282 2 Chinese Porcelain Items, Box & Tripod Cup**

2 Chinese Porcelain Items, Box & Footed Cup. 1st item: Chinese Famille Rose rounded rectangular box with curved side openings and an applied closed box to the top in the form of a silk covered book. Top additionally decoration with painted figural decoration of three boys in a landscape setting. Interior of box with robin's egg blue glaze. 3 3/4" H x 7 3/8" L x 3 1/2" D. 20th century. 2nd item: Chinese tripod cup with iron red glaze and gilt decoration with robin's egg blue interior. 6" H. 20th century/



Modern. Condition: 1st item: Overall very good condition. Small box with slight chip to edge. 2nd: Overall excellent condition. 200.00 - 300.00

**3088283 2 Chinese Porcelain Vases**

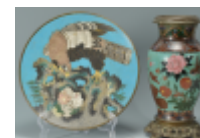
Two Chinese porcelain vases including one double gourd form with lemon yellow glaze and red seal form mark (9 1/8" H) and one barrel form vase with blue glaze, raised decoration to rim and base, foo dog bail handles and blue Ch'ien Lung seal form mark to base (6 1/4" H). Both items 20th century/modern. Condition: Both items excellent condition. 250.00 - 350.00

**3088284 Chinese Bulb Bowl & Pair Claire de Lune Vases**

First item: Pair of Chinese claire-de-lune glazed porcelain vases, shaped paneled body with figural handles. Ch'ien Lung seal mark to base. 9 1/4" H. 20th century/modern. Second item: Chinese porcelain bulb bowl with dark orange and brown mottled glaze, shaped body, elephant head handles and animal mask feet. Seal mark to base. 3 3/4" H x 8 1/2" W x 4 1/8" D. 20th century/modern. Condition: Overall excellent condition. 200.00 - 300.00

**3088285 Cloisonne Vase and Plate**

Cloisonne enamel decorated vase with birds and flower decoration on a green ground, raised on a pierced bronze base and mounted with a bronze collar. 12"H. 2nd item: Charger or large plate with cloisonne enamel decoration of a hawk and rabbit. 12" Diam. Both Chinese or Japanese, late 19th century. Condition: Vase does not sit completely flat. Charger has some chipping to foot ring on underside. 200.00 - 300.00

**3088286 Cloisonne Incense Burner with Dragon Knees**

Large cloisonne enamel decorated incense burner or ding with pierced domed cover, a floral and geometric decorated body, and three copper legs having dragon masks at knees. 19"H x 13" diam. Condition: Small chips to lid on finial, scattered minute abrasions, overall good condition. 200.00 - 300.00



September 12-27, 2013 iGAVEL 9/12/2013-9/27/2013

**3088287 Chinese Watercolor w/ Man & Horse**

Chinese watercolor on mulberry paper depicting a man leading a horse with buggy. Titled upper right and signed lower left. Housed in a contemporary silvered frame. 8-1/8" H x 8-5/8" W. Framed - 13-1/2" H x 13-5/8" W. mid 19th century. Condition: Some spotting to paper. 100.00 - 200.00

**3088288 2 Chinese Scroll Paintings**

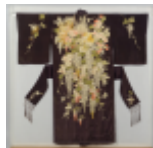
1st item: Chinese scroll painting depicting a pair of pheasants perched on a rock with trees, ink, gouache and watercolor on paper, upper left inscribed with poetic colophon, signature and six seals. Painting - 34 1/2" H x 16 1/2" W. Overall - 65 1/2" H x 23 1/2" W. 20th century. 2nd item: Chinese scroll painting depicting figures seated at a gaming table, ink, gouache and watercolor on paper, lower left inscribed with poetic colophon, signature and five seals in various locations. Painting - 34 1/2" H x 16 3/4" W. Overall - 54 1/2" H x 23 1/2" W. 20th century. Condition: 1st item: Slight overall yellowing to paper with some creasing. 2nd item: Some scattered foxing and creasing to paper. Overall yellowing to paper. 150.00 - 250.00

**3088289 Pr. Framed Chinese Silk Scrolls**

Pair of framed Chinese silk scrolls, artist signed, and both depicting fowl. Frames have brass hangers. Sight: 25" H x 41" W. Framed: 27-3/4" H x 43-1/2" W. Condition: Some abrasions to frames. Some water damage and fading to images. A few areas of scattered residue. 200.00 - 300.00

**3088290 Framed Japanese silk embroidered Kimono**

Japanese silk kimono, shades of chocolate, melon pink and pale green, embroidered with heavily embellished wisteria, chrysanthemum and other flowers, mounted in a clear case. Framed dimensions: 59" H x 54" W x 5"D. Provenance: acquired circa 1940 by a U.S. Military officer serving overseas. Condition: Fraying and fading at lowermost edge, scattered small holes and stains, especially to left side, overall good condition. 600.00 - 800.00

**3088291 3 Japanese Woodblock Prints**

Two framed double page book illustration woodblocks by Hokusai, circa 1812. One titled "Presentation to Emperor from Sea" (Sight: 9 1/2" H x 6 7/8" W. Framed: 15 5/8" H x 13 1/4" W) and "Samuri Training" (Sight: 6 5/8" H x 9 3/8" W. Framed - 13 1/4" H x 15 3/4" W). 2nd item - Woodblock by Utagawa Kunisada II (1823-1880) depicting a Geisha kneeling at a water basin. 9 5/8" H x 7 1/8" W. Circa 1865. Condition: 1st item - Both overall very good condition, Samuri woodblock with some toning to central seam. 2nd item - Some overall toning, losses to perimeter. 200.00 - 300.00

**3088292 Japanese 4 Panel Table Screen**

Japanese four-panel tempura on gilt ground table screen depicting figures in an outdoor setting engaging in various activities, signed lower right. Kyoto retailer label en verso as well as an "LJ made in Japan" label. 36 1/4" H x 74" W. Early or first half 20th century. Condition: Some damage to bottom of screen and some perforations to back. 100.00 - 200.00

**3088293 Japanese Charger and Bowl**

2 pieces Japanese porcelain. 1st item: Arita ware charger depicting birds, rocks, and a peony bush, 14" diameter. 2nd item: Large Imari ware bowl with three floral panels and gilt highlights, 5"H x 10-3/4" diameter. Condition: Both pieces in very good condition. Bowl has 2 minute firing flaws or abrasions to interior. 300.00 - 350.00

**3088294 2 Japanese Arita Chargers and Imari Style Plate**

Group of 2 Japanese chargers and an English Imari style plate. 1st item - Two blue and white Japanese Arita chargers, both with landscape decoration and one having a scalloped rim (13 1/2" dia. and 15 3/4" dia). 2nd item: English Imari style small plate with landscape and floral decoration. Numbered "1221" en verso. 7" dia. Late 19th/early 20th century. Condition: All items very good condition. 200.00 - 400.00



September 12-27, 2013 iGAVEL 9/12/2013-9/27/2013

**LOT #****3088295 Signed Japanese Porcelain Kutani Charger**

A signed Japanese Kutani porcelain charger with figural and script decoration depicting the seven lucky gods. Additional gilt and floral decoration on the outer rim. Signed in red characters on the base. 12 1/2" dia. Condition: Some cracklure to glaze, visible mostly on the backside. 100.00 - 200.00

**3088296 3 Chinese Green Glaze Bowls**

Grouping of three Chinese green glaze bowls. 1st item: Chinese green crackle glaze shallow bowl with the original bill of sale and fitted box. 1 7/8" H x 5 1/2" dia. 20th century. 2nd item: Chinese green crackle glaze deep bowl. 4 1/2" H x 7 3/4" dia. 20th century. 3rd item: Chinese green glaze dish with central lotus flower decoration and barbed rim. 1 1/2" H x 8 5/8" dia. 20th century. Condition: 1st item: Overall very good. 2nd item: Shallow chip with 1/2" crack to rim. 3rd item: Overall very good condition. 300.00 - 500.00

**3088297 3 Chinese Underglaze Blue Ceramic Items**

3 Chinese underglaze blue ceramic items. 1st item: Chinese Cizhou type bowl, possibly Ming Dynasty. Original bill of sale included. 2" H x 8 1/2" dia. 2nd item: Chinese underglaze blue ovoid jarlet, Ming Dynasty. 4" H. 3rd item: Chinese underglaze blue jarlet and cover, Ming Dynasty. Original bill of sale included. 5 3/4" H. Condition: 1st item: Overall very good. Some exfoliation to glaze. 2nd item: Overall very good. 3rd item: Some slight loss to glaze, some loss in the making. 300.00 - 400.00

**3088298 5 Asian Porcelain and Decorative Items**

1st item: Pair of Chinese porcelain vases with white ground hand-enameled with brightly colored Birds of Paradise against a background of peonies, with black filigree style trim painted at necks and feet. Chinese inscription or verse on backs and iron red seal marks on bases. 7-1/2"H. 2nd item: a smaller pair of Chinese vases with white ground, hand-enameled with mountaintop pagoda or temple scenes, black



filigree decoration at necks, verses on backs and iron red seal marks on bases. 4-1/8"H. 3rd item: tabletop lacquered wood frame, featuring two doors adorned with raised and painted decoration of figures in a landscape, opening to reveal a picture frame. Newly covered silk back. 12"h x 8-1/2" W x 5". Probably Japanese, Meiji period. 4th item: Chinese or Japanese white metal cocktail shaker or carafe with handle and covered spout, the body ornamented with raised foliate or berry decoration comprised of inset hardstones. Unmarked. 11"H. Midcentury, circa 1940. 5th item: Hand Painted silk scroll depicting a warrior. Signed lower right. 18-1/2" x 40-1/2". 20th century. Condition: Items 4 and 5 have scattered light wear and abrasions, 6th item has some light scattered foxing and a tear at the upper hanging bar. 250.00 - 350.00

**3088299 Group of Chinese Ceramics, 18th-early 20th c.**

3 Groups of early Chinese ceramics and export porcelain. First grouping: Five pieces of Chinese Export porcelain, Chien Lung period. 1st item: Bowl with iron red border and floral sprig decoration, orange peel texture glaze, marked on base with old museum accession number 58.2502. 2-1/2"H x 5-1/3" diameter. 2nd item: Famille rose tea cup with decoration depicting fishermen and boats. 1-3/4"H. 3rd and 4th item: pair of teacups, blue and white with Willow style landscape decoration, 5th item: small dish or saucer with blue and white landscape decoration and Chinese character mark to underside, 4" diameter. All Chinese, 18th century. Second grouping: Lot of thirteen (13) Chinese and Chinese-style ceramics. Lot includes six pieces of blue and white porcelain ware-1 lobed bowl, 3 regular bowls, 1 saucer and 1 miniature pot with Asian motifs, together with three porcelain saucers decorated with green and red glaze, three small celadon pots, 1 possibly Korean small blue and white craquelure pot. 3rd group: 1 Celadon porcelain figural fish with open mouth, possibly a vase, unmarked. 3-1/2"H; 1 Celadon porcelain plate, seal mark to underside, 7-1/2" diameter; 3rd item: 1 Blanc de Chine figure of Guan Yin, seated in the lotus position and holding a pearl. Unmarked. Hollow with pierced eyes, mouth and ears. 7-1/4"H; 1 Chinese porcelain fruit bowl, lozenge form with oval lobed sides on a conforming foot; overglaze polychrome enamel decorations of fruit, flowers, and other auspicious symbols in a Famille verte palette.



September 12-27, 2013 iGAVEL 9/12/2013-9/27/2013

3"h x 10-1/2" w x 8"d. Condition: First grouping: 1st item: some rubbing to exterior border decoration (underglaze). 2nd item: scattered rim chips, a 1" hairline extending from rim. 3rd and 4th item: significant dark crazing. 5th item: 1 very small rim chip. Second grouping: One blue and white bowl has small chips on lip. Miniature blue and white pot has chips and grime to lip and base rim. Biggest chip: 1-2". One celadon pot has 1/2" chip to lip. Possible Korean pot has damage to lip. Earthenware vase with black motif has chips to lip. Third grouping: Items 1-3: Some light grime to fish, minor firing flaws and foot ring chips to plate. 4th item: Some minor wear to enameling and scratching to interior. 300.00 - 350.00

**3088300 2 Chinese Han Dynasty Pottery Vessels**

Two Chinese Han Dynasty (206 BCE–220 CE) pottery items including a covered food vessel having three legs, rectangular handles and a paint decorated top (4 3/4" H x 7" dia.) and a storage jar with traces of old blue/green paint (9" H). Condition: Food jar with overall general wear. Storage jar with chip to rim and overall general wear. 200.00 - 400.00

**3088301 Carved Hindu or Balinese Buddha**

Carved Hindu or Balinese stone figure, depicted standing on a decoratively carved base. 21-1/2"H. Condition: General wear. 200.00 - 300.00

**3088302 Southeast Asian Bronze Sculpture**

Hollow bronze sculpture of an ancient style figure wearing a headdress and elaborate costume, in a praying position. Mounted to a hardwood base. 16"H, 21"H including stand. Condition: Some small rubbed areas, 1/2" holes in each elbow, small holes at tip of headdress (in back) and on underside of wrist. 200.00 - 300.00

**3088303 Grouping of UK Commemorative Coins & Medals**

Large grouping of commemorative coins and medals. Sets include: 1953 British Pre-decimal coin set, four (4) Silver Wedding Crowns to commemorate Queen Elizabeth and Prince Philip (2 in the original boxes), 1981 Royal Wedding Charles & Diana commemorative crown in the original box, two (2) 1953 Elizabeth II crowns in the original slide-top containers, two (2) 1971 sets of Britain's 1st decimal coins in the original folders, 1895 Royal Mint UK Proof Coin collection in the original box, 1986 UK brilliant uncirculated coin collection in the original folder, 1988 UK brilliant uncirculated coin collection in the original folder, two (2) sets of 1988 Hong Kong brilliant uncirculated coin collection, 1989 UK brilliant uncirculated two pound coin in the original folder, and a 1986 Royal Mint hallmarked medal commemorating the marriage of Prince Andrew to Sarah Ferguson in the original box. Individual coins and medals include: 1791 George III "Cartwheel coin", 1889 Victorian crown, 1965 Elizabeth II Churchill crown, 1961 South African 1 cent coin, and a 1919 medal commemorating the 1914-1918 Great War. Lot contains a minimum of 4 oz troy sterling. Condition: Boxed sets in mint condition. Loose coins in various states of wear. 200.00 - 250.00

**3088304 4 Giuseppe Armani Snow White Figures**

A group of four Walt Disney Giuseppe Armani Arte Snow White porcelain figures including Snow White (#209C), Sleepy (#915C), Sneezy (#914C) and Dopey (#200C), all signed and dated. Sleepy and Sneezy have original boxes. Snow White: 10-1/4" H, 3 others: 7" H, 2 boxes: 6 x 6 x 10. Condition: Excellent condition. 300.00 - 400.00

**3088305 Capodimonte Snow White & the 7 Dwarfs Figures Set**

Capodimonte limited edition Laurenz set of figures, Snow White and the Seven Dwarfs by Italian artist Enzo Arzenton. Snow White #51/5000 with original box and Certificate of Authenticity, Grumpy #59/5000, Sleepy #57/5000, Happy #60/5000, Bashful #58/5000, Sneezy #56/5000, Doc #55/5000 and Dopey #59/5000. Ranging in size from 5 1/2" H to 10 1/2" H. Snow White box: 13" H x 8-1/2" Square.





September 12-27, 2013 iGAVEL 9/12/2013-9/27/2013

Condition: Excellent condition. 400.00 - 500.00

200.00 - 250.00

**3088306 Giuseppe Armani Snow White's Wishing Well**

Giuseppe Armani limited edition Snow White's Wishing Well porcelain figural, signed. #384/2000. 12-1/4" H x 9" W x 6-1/4" D. Condition: Excellent condition. 350.00 - 450.00

**3088307 Lladro Peter Pan Figure**

Limited Edition Lladro Peter Pan porcelain figure, #455/2000, hand signed on the base by Hugh Robinson. Retains the original box. 9 1/8" H. Condition: Excellent condition. 250.00 - 350.00

**3088308 2 Bob Baker Disney Marionettes**

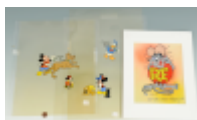
2 Bob Baker marionettes. 1st item: Special Edition Walt Disney "Wicked Queen #28" marionette by Bob Baker, made especially for the Walt Disney Company by Bob Baker Marionettes. 28" H. 2nd item: Special Edition Walt Disney "Witch #29" marionette by Bob Baker, made especially for the Walt Disney Company by Bob Baker Marionettes. 27 1/4" H. Both 20th century. Condition: Both overall very good condition. 400.00 - 600.00

**3088309 Capodimonte Disney Snow White & Witch Figural**

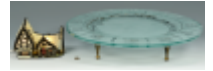
Laurenz Capodimonte limited edition porcelain figural group depicting Snow White and the Witch handing Snow White the poison apple, #531/2500, by Italian artist Enzo Arzenton. 11 1/2" H x 15" W x 11 1/2" D. Condition: Excellent condition. 300.00 - 400.00

**3088310 4 Disney Animation Cels**

Group of four Disney animation cels including Mickey Mouse with large dog, Rat Fink, Donald Duck with kitten puppet, and Mickey Mouse with Pluto and Minnie Mouse. 10-1/2 x 10 to 18-1/2 x 13. Condition: Images in very good condition. Celluoid with surface scratches.

**3088311 Two Snow White Limited Edition Items**

Two Snow White themed decorative items. 1st item: Snow White Magic Mirror limited edition glass bowl on verdigris metal stand. Signed and numbered on rim "P. Conti, 115/500, copyright Disney." Bowl: 20" diameter, stand: 3-1/4" H x 14-1/2" diameter. 2nd item: Stained glass cottage electrified lamp from Disney Lighted Village, "The Seven Dwarfs" Cottage by Bill Jobs of Forma Vitrum, copyright Disney, No. 345 of 1937. 4-3/4" H x 7" W x 5" D. Condition: 1st item: Wear on surface and scratches on rim. 2nd item: Excellent condition. 200.00 - 250.00

**3088312 6 Vintage Walt Disney Character Watches**

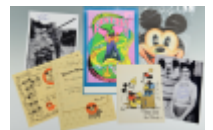
Five Vintage US Time Walt Disney character watches including two Bambi wristwatches, one Dopey wristwatch, one Bongo wristwatch, one Joe wristwatch and one Bugs Bunny pocket watch. Six watches total. All circa 1950's. Condition: Watches not tested for functionality. Joe watch with wear to clock face. Losses to red paint on Bugs Bunny watch. 150.00 - 250.00

**3088313 Carl Barks Walt Disney Signed Litho**

Carl Barks (American 1901-2000) Walt Disney signed and numbered print titled "Help! Help! Our Unca Donald is Number Two in a Food Chain", numbered 9/300 together with a Certificate of Authenticity and numbered photograph of artist holding the original watercolor from which the lithograph is based. Unframed. 11 3/8" H x 14" W. Condition: All items very good condition. 150.00 - 250.00

**3088314 Group of Assorted Disney Memorabilia**

Group of assorted Disney memorabilia including two 1950s Mickey Mouse Club member certificates; Annette Funicello signed mouseketeer photograph; Mickey Mouse studio fan card; Mickey Mouse "par-T-mask"; Fess Parker (Daniel Boone) autographed photograph; and a Walt Disney Fantasia



September 12-27, 2013 iGAVEL 9/12/2013-9/27/2013

psychedelic poster, 9-1/4" x 7-1/4" to 14-3/8" x 9". 7 items total. Condition: Overall very good condition. Slight yellowing to paper of certificates and mask. Rubber bands on mask have deteriorated. 100.00 - 150.00

### 3088315 F. Follmer, 2 Snow White Drawings

Frank Follmer (d. 2000), lot of two cartoon sketches depicting Snow White and the Seven Dwarfs (one depicts only dwarves). Pencil on paper, signed lower right "F. Follmer." 12" x 18". Accompanied by copy of a 1997 letter from Robert Tieman, manager of the Walt Disney Archives, stating that Frank Follmer worked for Disney from 1937-1940. Although there is no record of exactly what projects he worked on, Tieman writes it is likely that given the time period he did work on the animation for Snow White. Condition: Browning to edges, and one 1/4" tear lower edge of one drawing. 400.00 - 500.00



### 3088316 2 Mickey Mouse Ingersoll Pocket Watches & MM Fob

Two 1930's Mickey Mouse Ingersoll pocket watches and one Mickey Mouse watch fob. Watches measure 2 3/4" dia. Condition: Watches are not in working condition. Losses and some fading to watch face. 200.00 - 300.00



### 3088317 2 Raggedy Ann & Andy Production Cels

Two production cels from Raggedy Ann and Andy: A Musical Adventure, gouache on celluloid, 20th Century Fox, 1977. One cel featuring Raggedy Ann and Andy against a photocopy of the Captain's ship and the other cel featuring Raggedy Ann and Andy with other toys against a photocopy of little Marcella's room. Each 16" H x 11-3/4" W unframed. Condition: Images in very good condition. Celluloid with surface scratches. 100.00 - 150.00



### 3088318 1964 German Beatles Poster, A Hard Day's Night

A framed 1964 German Beatles poster promoting A Hard Days Night and reading "THE BEATLES, ORAZ DWANASCIE"



NAJNOWSZYCH PIOSENEK W ICH PIERWSZEJ, PETNEJ PRZYGOD I MUZYKI KOMEDI, REZY RICHARD LESTER, PRODUKCJA WALTER SHENSON - UNITED ARTISTS 1964. Designed by Swierzy. Sight - 35" H x 24 1/2" W. Framed - 37" H x 26 3/8" W. Condition: Some slight losses/pin holes to corners and mid right margin. Overall very good condition. 100.00 - 150.00

### 3088319 Grouping of Beatles Memorabilia, 6 items

Grouping of Beatles memorabilia. (1) Fossil Hard Days Night Limited Edition watch with leather strap in original box, copyright 1998; (2 and 3) Pair ceramic candlesticks with Beatles transfer print images, marked Liverpool on base, c. 1960, 8" H, (4) 1964 Beatles post card, printed in Germany, 5-5/8" x 7-7/8"; (5) 1964 Beatles poster, 24-1/2" X 20-5/8" (small tear in upper left corner); and (6) Liverpool Echo newspaper, dated December 9, 1980, with the headline of John Lennon's death, 11-3/4" folded x 15-3/4". Condition: Fossil watch not tested. Tape residue on candlesticks. Some yellowing to postcard, poster and newspaper. 100.00 - 150.00



### 3088320 2 Vintage Boy Scout Watches, 1 w/ Bronze Fob

Two vintage boy scout watches including a 1934 Ingersoll wristwatch with leather band and a 1929 Ingersoll pocketwatch with leather band and bronze Philadelphia Council watch fob. Condition: Watches are not in working condition. 200.00 - 250.00



### 3088321 1961 Ideal Astro Base & Count Down

Two Ideal Toy Corporation c.1960 plastic space toys. 1st item: Boxed Ideal Electronic Count Down, space base complete with all rockets in original box, box measures 12" H x 25" W x 11-1/4" D. 2nd item: 1961 plastic battery operated Astro Base with lunar rover, base: 20-1/4" H, rover: 7-1/2" H. Condition: 1st item: Box with tears and wear. Sticker residue on some rockets. 2nd item: Some rust on metal plate of lunar rover. Not tested for functionality. 200.00 - 250.00



September 12-27, 2013 iGAVEL 9/12/2013-9/27/2013

**3088322 Whale Oil Lamp, lithopane shade**

Whale oil lamp with colorless thumbprint font, baluster column and marble base, 13"H. White bisque lithopane shade has five panels, each depicting mostly landscape scenes in relief, enclosed in a decorative pierced metal frame. One panel is signed "Lausanne." 9-1/2"diam., 6-1/2"H. Both 19th century. Condition: Lamp has been electrified and has some small chips to marble base. Shade has some light oxidation and small bent elements on metal frame; panels in excellent condition. 300.00 - 400.00

**3088323 3 PA Pottery Items, 2 with Cobalt**

Three Pennsylvania stoneware pottery items including a three gallon, salt-glazed crock with stenciled cobalt maker's mark, "E.S. & B., NEW BRIGHTON, PA " (10-1/2" H), salt-glazed crock with cobalt decorated flower and handles stamped "PENN YAN", possibly made by J. Mantell, (9-3/8" H) and a glazed redware bowl (7-7/8" dia.). 19th and possibly early 20th century. Condition: Three gallon crock in overall very good condition. PENN YAN crock with two hairline cracks extending from rim into body, the longest 2 1/2" L with some chips to rim. Redware bowl overall very good condition. 300.00 - 350.00

**3088324 2 New England Cobalt Decorated Pottery Items**

Two New England cobalt decorated pottery items including a salt-glazed cobalt decorated two gallon stoneware jar stamped "NEW YORK STONEWARE CO. 2" and a salt glazed cobalt decorated stoneware jug stamped "NICHOLS & ALFORD, BURLINGTON, VT". Pots measure 11-1/2" H and 11-3/4" H. Late 19th - Early 20th century. Condition: Some shallow chips to rim of New York jar. Shallow chip to handle of Vermont jug. 300.00 - 400.00

**3088325 Pennsylvania pictorial Sampler circa 1815**

Circa 1815 silk and chenille on linen sampler with houses, figures and verse in cross and embroidery stitches, signed at top Eliza-th Jones Remington Her Work in her 8th year. Underneath her name is a verse in a cartouche



(The Lord my pasture shall prepare / And feed me with a shepherd's care; His presence shall my wants supply/ And guard me with a watchful eye), flanked by pots of flowering plants and birds. The lower half of the sampler is worked in a landscape design with two trees, a house, fence, and two couples, both fashionably dressed men and women in plumed hats. Several sheep graze along the lower edge, and the sampler is surrounded by an elaborate floral and geometric border. Floated on a linen background and framed under UV resistant glass in a primitive style red washed wood frame. 16-5/8" X 21-1/2" sampler, 21" X 26" framed. Elizabeth Remington's sampler is attributed to an important group who worked at an unknown Philadelphia school. For similar examples see Betty Ring, AMERICAN NEEDLEWORK TREASURES, pp. 38-39 (both of which sold at Sothebys in Jan. 2012, lots 639 and 642) and Margaret Schiffer, HISTORIC NEEDLEWORK OF PENNSYLVANIA. Elizabeth Jones Remington was the daughter of Captain John Pearce Remington of Philadelphia and his wife Elizabeth Strickland Remington. Although her birth date is not known, she had a brother born in 1800. She died in 1884 and is buried in St. Peter's Episcopal Churchyard, Philadelphia. Condition: Sampler has been floated atop and sewn to a linen covered board. There is some ground and thread deterioration to the border, most noticeably in the lower left corner. Black thread shows typical deterioration (most noticeably on faces) and fading/bleeding, most noticeably on verse. Overall fading. Later frame, UV glass. 3,500.00 - 4,500.00

**3088326 Harriet Wheeley Needlework Sampler**

Schoolgirl sampler, signed Harriet Amelia Wheeley, silk on linen, done in shades of green, gold and brown. The design consists of cross-stitched upper and lower case alphabets and numbers, divided by rows of geometrics, over a poem or verse and a lower row of pictorial images including trees and flowering plants, eight point stars, crowns, and the stitcher's signature under a heart, all enclosed in a trefoil band border. Later wood molded frame. Probably American/New England, circa 1830. 12-1/3" x 12-1/3" sight, 15-1/2" x 15-1/2" framed. Condition: Discoloration and small losses to outer edges, scattered ground losses particularly at left center below smallest alphabet. Not examined out of frame, but



September 12-27, 2013 iGAVEL 9/12/2013-9/27/2013

appears to be stitched to backing rather than glued. 400.00 - 500.00

of abrasion at rear of sculpture, various scratches and natural imperfections in stone.  
Item 3: Excellent condition. 300.00 - 400.00

**3088327 2 Samplers, Pictorial Bible Verse and Building**

1st item: Unusual cross stitched cotton or silk on linen sampler, rectangular form with verse and pictorial images including that of a Bible. The verse reads "When thou passest through the waters I will be with thee and through the rivers, they shall not overflow thee. When thou walkest through the fire, thou shalt not be burned neither shall the flames kindle upon thee. (Isaiah 43:2). Images beneath the verse include a book labeled Bible, tree, dogs or lions, crown, and flowering plants, all executed in shades of green and yellow. Unsigned and unframed, nailed to a wooden stretcher. 13" x 20".



American or English, last half 19th Century. Provenance: Descended in a Buncombe, North Carolina family. 2nd item: Mid 19th century wool on linen cross-stitched sampler, unfinished floral border surrounding a large depiction of three yellow, red and ivory colored buildings placed side by side, possibly houses, over an upper case alphabet and signature: Helen Jane Darroch/aged 11 years 7 months 8 days. Unframed. 17" x 15". Provenance: a Murfreesboro, Tennessee estate. Note: census records show Darroch families in Ireland and North Carolina. Condition: 1st item: Overall discoloration, few areas of thread loss to lettering especially on the words "passest" and "kindle". 2nd item: Large stain to upper right quadrant and other scattered smaller stains, scattered losses to wool on border and ivory house, top row of letters appears to have been picked out, fraying at left edge. 300.00 - 400.00

**3088328 3 pieces Inuit Art**

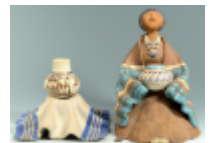
1st item: Inuit woodblock print depicting a hunt, signed and titled in Inuktitut symbols and dated 1965, numbered 25/30 with embossed stamp at lower left. 11" x 20" sight, 15-3/4" x 24-3/4" framed. 2nd item: Carved soapstone sculpture of mother carrying a child on her back. 5-1/2". 3rd item: Small carved hardstone buffalo figure, signed on underside of foot, possibly JK. 2"H x 3"L. All 20th century. Condition: Item 1: Top edge of woodblock is curling down, light toning. Item 2: Possible scratched Inuktitut signature on underside translating as Miaji. Line

**3088329 4 Native American Antiquity Items**

1st grouping: Two (2) Mississippian greyware cooking jars. 1st item - Mississippian strap handled cooking jar with a third, flat handle formed from the rim. 6" height x 7" width. 2nd item - Mississippian greyware cooking pot with small flared handles formed from the rim. 7 1/2" height x 9 1/2" width. 2nd grouping: Southwestern or Mexican redware tripod bowl and water jar. 1st item - Southwestern/Mexican redware bowl with tripod lobed feet with stretchers joining each lobe at the base. 6 1/4" height. 2nd item - Small Southwestern/Mexican redware water jar. 3 3/4" height. Property of an East Tennessee Educational Institution. Condition: 1st grouping: Both jars broken and glued. Losses at rim on handled cooking jar. Losses to edges where pieces glued back together. 2nd grouping: 1st item - overall very good condition with expected light wear to outer rim edge. 2nd item - repair to rim area, chip to rim, glue or varnish residue on base. 200.00 - 300.00

**3088330 2 Terry Slonaker Contemporary SW Pottery Items**

Two Terry Slonaker (American, /Arizona, 20th century) stoneware pottery items including a vase comprised of a Southwest style pottery jar and Southwest blanket (6" H x 8 1/2" W) and figure of a Native American woman seated with a pottery jar and blanket (11 1/8" H x 7 1/2" W). Condition: Both items excellent condition. 200.00 - 300.00

**3088331 2 Choctaw Rivercane Baskets & 1 Cherokee**

Grouping of Native American baskets including two early 20th century Choctaw rivercane baskets (5 1/2" H x 9" W), both with wrapped rims and square bottoms with some dyed weavers and one Cherokee honeysuckle basket with three bands of dyed weavers in a wastebasket form (7" x 7"), 20th century. Condition: Breaks to one corner of each of the Choctaw baskets. Cherokee basket overall very





September 12-27, 2013 iGAVEL 9/12/2013-9/27/2013

good condition. Fading to dyed areas of  
Choctaw baskets. 200.00 - 300.00

**3088332 3 Cherokee Baskets, 2 w/ Qualla Tags**

Grouping of three Cherokee baskets, two large wastebasket forms with Qualla Workshop tags and one medium waste basket form, all splint oak with alternating dyed weavers. Smallest measures 10 1/2" H x 8 1/2" W. The largest measures 14" H x 12 3/4" W. All 20th century. Condition: All overall very good condition. 250.00 - 350.00

**3088333 Folk Art Carved Powder Horn**

18th century powder horn with cork cap, the exterior abundantly carved with pictorial folk art symbols including birds, cross, trees, heart, windmill and large snake. 10"L. Provenance: private collection, acquired in Vermont several decades ago. Condition: Some wear and loss of definition to symbols on one side, natural cavities. 400.00 - 500.00

**3088334 Folding Travel Chess Set**

Folding miniature travel chess set, mahogany or cherry folding case with inlaid 7-1/2" square game board and 32 vegetable ivory or celluloid chess pieces, all 1/2" H with pegs to secure them on the board. Case folds to 1" x 8" x 4". Probably English, Circa 1900. Condition: Several loose joints to case, minor wear. 100.00 - 200.00

**3088335 Vintage Fly Fishing Group**

Vintage fly fishing equipment including Southbend Bamboo Fly rod and reel with metal rod tube (40" L), two original metal fly boxes, complete with original flies, plastic fly box with flies, metal perforated live bait box and two vintage wicker fishing creels (largest measures 9" H x 14" W), one with fish emblem buckle. Included with group is the original wooden packing chest (5" x 10 3/4" D x 48 1/2" L). Mid 20th century. Condition: All items very good condition with expected wear. 200.00 - 300.00

**3088336 Diminutive Storage Chest w/ Brass Tack Decoration**

Diminutive American storage chest, possibly a spice chest, with brass tack decoration including a compass star on the top and a figure on the front. Interior fitted with a top compartmented gallery over a plain interior, brass handles to sides and bracket feet. 12 1/4" H x 20 1/2" W x 11 3/8" D. 19th century. Condition: Some overall expected wear, losses to feet. 250.00 - 350.00

**3088337 Large inlaid Mahogany Lazy Susan**

Large George III style inlaid mahogany lazy susan, circular dished top with glass cover over a double line inlaid lower surface, raised on a turned center with stepped convex base. 24" diameter, 6"H. English, probably late 19th to early 20th century. Condition: Some screws replaced, minor scratching and irregular fading to edges. A couple of pieces of glazing have come loose under the glass. 400.00 - 500.00

**3088338 Harald Petersen Spanish Concert Guitar**

Spanish concert guitar by Harald Petersen, distributed by the Spanish Guitar Center, London. Body appears to be comprised of cedar and rosewood. Housed in a black felt lined hardcase. Note: Harald Petersen (1910 - 1969) was an internationally known Danish guitar designer and builder. He designed primarily classical guitars but also jazz guitars and other stringed instruments. Condition: Some age cracks to wood on front of body. Separation to center seam on back. Overall general wear. Case with overall general wear and losses. 300.00 - 400.00

**3088339 Gem Roller Organ w/ "Cob" Cylinder Rolls**

Gem Roller Organ with hand wound mechanism and black and gilt stenciled case. Sixteen (16) additional rolls included. 7 3/4" H x 11 3/4" D x 12 1/4" W. Circa 1900. Condition: Some wear to edges and back. Some felt cushions missing. 350.00 - 450.00





September 12-27, 2013 iGAVEL 9/12/2013-9/27/2013

**LOT #****3088340 Pr. J. Adlhart Carved Wooden Austrian Figures**

Pair of Jakob Adlhart (1881-1985, Munich, Germany & Salzburg, Austria) carved wooden figures depicting a dancing man and woman in native Austrian clothing. Artist's signature, location and date carved into base of each. 14-1/2" H, dated 1947. Condition: Both overall very good condition. 300.00 - 400.00

**3088341 Bronze Flag Stand**

Bronze flag stand, ornate patinated square columnar base with patriotic decorations on each side and the words "Hugar Patria Pas", also marked "Dr. Emilio Rubio/ Republica Argentina". 50"H, 9-3/4" square base. Circa 1900. Condition: Very good condition. 300.00 - 350.00

**3088342 Two Art Deco Figures on stone bases, Fayral**

Two Art Deco green patinated bronze figures modeled as leaping girls, possibly javelin throwers, atop triangular stone bases. One base incised Fayral (Pierre Le Faguays, French, 1892-1935) Fayral was a pseudonym often used by Le Faguays. Most were produced by the Le Verrier foundry of Paris. Both 23"H x 5"D x 11"W. French, circa 1930. Condition: Figures at one time had something in their hands. Stone bases have scattered small chips at bases; one has small crack to front. Bases are not an exact match to each other. 600.00 - 800.00

**3088343 Bronze Sculpture, Mother and Child**

Abstract bronze sculpture depicting a mother and child. No artist signature found; stamped Modern Art Foundry. 12"H (14" including base). Provenance: found in Argentina. 20th century. Condition: Excellent condition. 300.00 - 350.00

**3088344 Walt Horton Bronze Bear Sculpture**

Walt Horton (1949-2010) bronze bear sculpture titled "Toe Jam" depicting a seated bear licking a paw. Signed "Walt" and numbered 7/200 on side. 6 1/2" H. 20th century. Condition: Excellent condition. 700.00 - 800.00

**3088345 Umberto Romano Sterling Silver Plaque**

Mounted sterling silver plaque by Umberto Romano of Toreador and Bull from the Franklin Mint, #113/225. Frame: 12" H x 14-1/8" W; Plaque: 6" H x 8-1/4" W and 12 troy oz weight. Condition: Overall very good condition with minor surface scratches. 225.00 - 275.00

**3088346 Spelter Female Figural Lamp Base**

A bronzed spelter figural lamp base in the classical manner depicting a seated female playing a harp, mounted on a wooden base. Figure measures 7 3/4" H x 8" W. Overall measurements including harp: 20 3/4" H x 11" W x 7 3/4" D. Provenance: A Mississippi estate. Condition: Overall very good condition. 100.00 - 200.00

**3088347 Blackamoor Lamp**

19th century Continental carved wood blackamoor figure mounted as a lamp, black shade with gilt highlights. 12" H figure, 30"H including base and shade. Condition: Scattered chips to paint, largest is 3/4" diameter on sleeve. 300.00 - 400.00

**3088348 16 pcs. Chinese & English Porcelain**

1st group: 2 teabowls and deep saucers, delicate blue and white swag design at rim, saucers 5" diam, cups 2-1/2"H. Probably Chinese, 18th century. 2nd group: 4 pieces Caughley/Worcester porcelain with crescent mark, dark blue borders with gilt design: can or handled cup with matching saucer, 8" shallow dish and 7-1/4" bowl, English, late 18th to early 19th century. 3rd group: 4 teabowls with saucers, ribbon garland style pattern and floral sprays, solid red band border. Cups: 1-5/8"H,



September 12-27, 2013 iGAVEL 9/12/2013-9/27/2013

saucers: 5" diameter. 4th group: 4 cans or handled cups and matching saucers with red/blue ribbon border and floral sprigs, orange peel texture. Cups: 2-1/4", saucers: 5" diameter. English or Chinese Export, Late 18th century. Provenance: the estate of Margaret Wemyss Connor, Nashville, Tennessee. 250.00 - 350.00

**3088349 Minton Bamboo ware, Majolica fish pitcher & plates**

Six 19th century Minton dinner or luncheon plates in the Bamboo pattern, marked en verso with impressed Minton mark and English registry mark, handpainted leaf pattern with raised border, 10-1/4" diameter, together with a very large matching platter, 21" x 17". 2nd item: Four Bavarian plates with handpainted tomato and vine decoration, marked Saxe en verso, 8-3/4" diameter, late 19th to early 20th century. 3rd item: Majolica fish pitcher, unmarked, 10"H. Probably late 19th century. Condition: Bamboo plates: scattered light paint wear and crazing. 1 with hairline, 1 with break. Platter with extensive cracking and repairs, wear to rim. Tomato plates: couple of tiny rim chips, overall excellent condition. Fish pitcher: small (1/4") glaze chip near gill, otherwise very good condition. 200.00 - 300.00

**3088350 Pair European style Figurines & Plates**

Group of European style porcelain items, early 20th century. (1) Pair Dresden type porcelain figurines of man and woman holding flowers, 6" H each, with different faux factory marks. (2) One porcelain handpainted dinner plate decorated with courting scene and floral vignettes with gilt border, a faux Meissen mark on base, 10" diameter. (3) Set of 10 porcelain handpainted dessert plates decorated with various scenes of lovers with border of floral swags and gilt border, base stamped Ovington Brothers, 7" diameter. 13 total items. Condition: (1) Some minor breaks to flowers. (2 & 3) Minor loss to gilt. 200.00 - 250.00

**3088351 Mettlach Covered Tureen #2087**

Mettlach porcelain covered tureen, #2087, the baluster shape body decorated with a relief band of celebrating figures and lion mask handles and the top decorated with German words. 14-1/4" H x 14-3/4" W. Late 19th century. Condition: Repair to one handle, otherwise very good condition. 200.00 - 300.00

**3088352 7 German Steins - 4 Glass & 3 Earthenware**

Grouping of seven German steins including three (3) grey pottery examples with relief molded bodies, two with paint decorated tops together with four (4) molded glass examples, three having paint decorated tops. Ranging in size from 4-3/4" H to 9" H. Smallest stein and domed glass stein are contemporary reproductions. The others late 19th/early 20th century. Condition: Smallest stein and domed glass stein are contemporary reproductions. Largest stein missing thumbpiece. 250.00 - 350.00

**3088353 Grouping of 3 Steins, incl. Majolica**

Grouping of three pottery steins: a large Majolica stein with colorful bird, insect and foliate decoration and pewter top (14 1/2" H), a German pottery stein with relief decoration depicting a young couple and cupids with a bell top and figural thumbpiece (9" H) and a German Spaten-Brau, Munchen stoneware stein with pewter top (6 1/2" H). Condition: Majolica stein has chip to base and overall cracklure. Cupid stein with multiple hairline cracks. Stoneware stein in very good condition. 200.00 - 300.00

**3088354 6 Armorial Plates**

Set of six armorial or heraldic plates with gilt borders, the centers decorated with coat of arms and banners reading "Societe St. Sebastiaan te St. Nikolaas Gesticht in 1525." Retailer mark "L. Soudanas H. Greiner Suc." on back. 9" Diam. Probably Belgian, late 19th century. Condition: Light wear to decoration and gilding, no chips or crazing noted. 200.00 - 300.00



September 12-27, 2013 iGAVEL 9/12/2013-9/27/2013

**LOT #****3088355 Rosenthal Dinnerware Service**

Assembled set of Rosenthal porcelain handpainted dinnerware, pattern R976, with 6 dinner plates (10" diameter), 13 bread and butter plates, 8 fruit bowls, 5 dessert plates, 6 saucers, 1 demitasse cup (3-1/2" W), 1 vegetable serving dish (11-1/4"L w/ handles) and 3 oval serving platters (9-1/4" - 12-3/4" L). Group also includes 8 tea cups with similar floral decoration (transfer-painted) from Schryarzenhammer, Germany. 62 items total. Condition: Overall very good condition with some surface abrasions and wear to gilt. One Rosenthal service saucer with chip. 250.00 - 350.00

**3088356 Large assortment of European porcelain**

Large assortment of European porcelain handpainted floral decorated dinnerware including 6 Hutschenreuther soup plates; Large group with various Dresden marks including: 5 bread and butter plates with small scalloped gilt rims, 4 plates with reticulated borders, 9 saucers of various sizes, 6 plates of various sizes and 1 fruit dish, 1 relish tray, 1 covered box, 1 creamer, 1 dish with scalloped rim, 1 matching cup and saucer, 1 dish with matching saucer, 1 tea cup with courting scene and red and gold highlights; 1 KPM custard dish and saucer; 1 Saxony dinner plate with center crest and fleur de lys, 1 Saxony fruit saucer; 1 Nymphenberg 6" plate, 1 Nymphenberg late 20th c. serving platter; 1 French faience soup plate; 1 Old Vienna 5" plate. 40 items total. All early to late 20th century. 3-1/2" to 15-1/4" W Condition: Overall very good condition with some surface abrasions and wear to gilt. 250.00 - 350.00

**3088357 19 enamel boxes incl floral, holiday, love notes**

Group of 19 enamel boxes including 1 Halcyon Days music box, 5 Halcyon Days boxes, 1 Toye Kenning & Spencer Ltd., 1 Crummles & Co., 11 Limoges, France boxes. Designs include floral motifs, holidays and love notes. 20th century. 1-1/8" L to 2-1/2" L. Condition: Overall excellent condition. 350.00 - 450.00

**3088358 Danish and German Collectible Plates**

Large group of collectible Christmas, Mother's Day and Four Seasons plates including Royal Copenhagen, Bing and Grondahl, Royal Bavaria, Rosenthal and a few other German manufacturers. Approximately 105 total. Most dates span from 1950s to 1990. 3" to 9-1/4" diameter. Condition: Overall very good condition. 300.00 - 350.00

**3088359 2 Lladro Porcelain Figures**

Two Lladro porcelain figures including a large standing dentist with his tools, retains the original box (13 1/2" H) and a seated young boy with hand cymbals. 5 1/4" H. Both items 20th century. Condition: Both items excellent condition. 200.00 - 250.00

**3088360 Turkish Van carpet, 11.7 x 8.9**

Turkish Van carpet, 11'7" x 8'9", highlighted with weaver's name "Selamy" and date of 1987, center medallion, light-brown ground, highlights of grey, brown, green and pink. Provenance: Blount County, TN collection. Condition: Overall very good condition. 900.00 - 1,200.00

**3088361 Northwest Iran Persian Rug**

Northwest Iran Persian wool rug with central diamond design in colors of pink/red, blue, brown, taupe and cream. 35-1/4" x 62-1/2". Early 20th century. Condition: Overall very good condition with some fading and light wear, loss to fringe on one side. 250.00 - 350.00

**3088362 Semi Antique Oushak Rug**

Semi-antique Oushak rug, in colors of peach, brown and taupe, wool with some cotton touch ups. 5'-10" x 3'-7". Turkish, 20th century. Condition: Overall good condition with general wear. Fading to peach colored areas, likely due to chemical wash. 250.00 - 350.00

